

INSTALLATION GUIDELINES

SUNLITE™



Signature[®]
signaturefloors

GENERAL CONDITIONS

A good preparation is essential for a smooth installation. *Sunlite™* can be installed on concrete, timber, ceramic and many other sub-floors.

Sunlite™ must be installed as a floating floor. The floor should not be adhered, nailed or pinned in any way to the sub-floor or structure, and fixed cabinetry must not be built over. The use of additional underlays is not approved.

It is possible to install *Sunlite™* over floors incorporating underfloor heating, provided it is built into the substrate, and must be insulated to ensure surface temperature does not exceed 27°C. It is recommended on a new concrete slab that the heating is operational for several days prior to installation to reduce moisture in slab. Three days prior to installation, lower to 18°C. 24 hours post installation, gradually increase in increments of 3°C per day until it reaches the maximum operating temperature of 28°C before being turned back to its normal household temperature. Temperature should not be adjusted by more than 3°C per 24 hour period.

Sunlite™ can be installed over most existing hard floorcoverings. When installed over ceramics, grout lines should not exceed 4mm in width or depth. Carpet cork and existing floating floors are not suitable substrates.

A minimum 6mm perimeter gap must be kept against all permanent walls and fixings. The gap must be extended to 10mm when the length of an area exceeds 18 lineal meters.

Post installation of skirtings or the use of scotia is recommended to cover expansion gaps. The use of caulking compounds and silicone is not approved as it restricts expansion.

SUBSTRATE PREPARATION

Sub-floor preparation is vital for an excellent floor appearance and good installation. The sub-floor must be hard, flat, smooth, clean, dry, free from defects and fit for purpose and have less than ±3mm over 1000mm deflection.

If required, a suitable levelling compound should be used to ensure that no irregularities impact the finished floor. However, the selection of suitable materials, including smoothing and levelling compounds and any ancillary products is dependent upon the end use of the completed flooring, and must be agreed by the supplier

of the preparative materials and the installer. Any proprietary materials used for floor preparation must be used in accordance with the manufacturers' recommended instructions.

Because our product is waterproof, the sub-floor moisture will not affect the floor itself. Excessive sub-floor moisture may result in smell or mould below the flooring. Concrete substrate moisture should not exceed 95% RH (relative humidity) when tested in accordance with ASTM F 2170.

The finished appearance of a *Sunlite™* floor will be as good as the quality of the base over which it is installed. Any intense irregularities in the sub-floor may affect performance.

SITE CONDITIONS

Sunlite™ performs to its specifications when laid at room temperature between 10°C – 40°C, and only requires acclimatisation outside of these temperatures. It is preferable that the packs are stored lying flat, stacked squarely and away from vents and direct sunlight. It is recommended that you block out windows where direct sunlight streams in onto the floor to allow for continuity across the whole area to be laid during installation.

PREPARATION

1. Before installation, check all panels in daylight for possible defects or discrepancies in colour or shine.
2. Check that the tongue and groove of the *Sunlite™* profile is free from dirt and undamaged.
3. For best results, mix at least two packs when fitting to avoid repetitions in the pattern. It is also preferable only to use material from the same batch in a single room.
4. The surface beneath the floor must be sufficiently prepared in advance to guarantee successful fitting of the floor covering.

In particular, it must be clean, dry, smooth and firm.

WARRANTY

Further information is available in our *Sunlite™* Care & Warranty Guidelines from your place of purchase and Signature Floors website www.signaturefloors.com.au

Important

Floor installation should not begin until the installer has assessed and approved the sub-floor and conditions.

STEP-BY-STEP FITTING INSTRUCTIONS

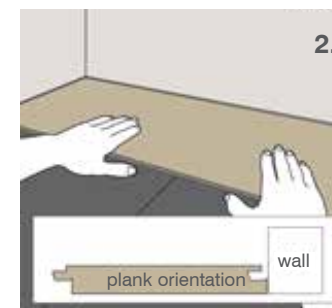
Sunlite™ is a "floating" floor. The panels should not be glued or fixed to the surface below or pinned to perimeter walls.

The flooring must be installed leaving a perimeter gap of 6mm for all rooms, fixed furniture and fittings.

For surfaces larger than 400m² or a single wall or run be longer than 20 linear metres, an expansion joint will be required. Please contact Signature Floors for advice.

INSTALLATION PROCEDURE

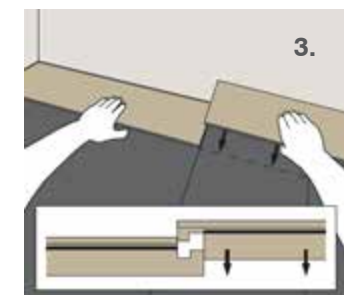
1. Undercut all timber door jambs prior to commencement, and allow adequate expansion of minimum 6mm.
2. After thoroughly cleaning the sub-floor, you should begin laying from left to right. Place the plank 6mm from the left wall. Use spacers between the wall and the plank.



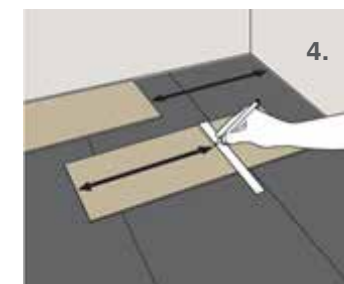
3. To complete the first row, drop the second plank and gently press down the end with a rubber mallet so it firmly locks into the previous plank until both are at the same height. Make sure both planks are perfectly aligned.

NOTE: If you notice both planks aren't at the same height or are not well locked together, please follow the disassembling instructions at the end of this document to disassemble and check if any debris stuck inside the lock is obstructing.

WARNING: FAILURE TO PROPERLY LINE UP THE END JOINT AND ATTEMPTING TO FORCE IT IN WHILE OUT OF ALIGNMENT COULD RESULT IN PERMANENT DAMAGE TO THE END JOINT.



4. At the end of the first row, leave an expansion gap of 6mm to the wall and measure the length of the last plank to fit.



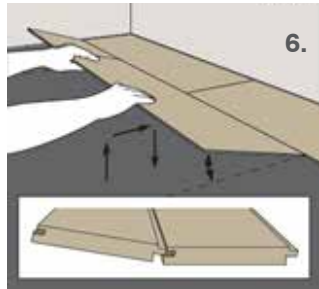
5. To cut the plank, use a simple utility knife and straight edge, and with the top side facing up, cut heavily and several times on the same axis. The knife will not go through the surface but make a deep cut. You can then lift one half of the plank using your other hand to hold down the second placing it very close to the cut. The plank will split naturally.

With small and intricate cuts, it may sometimes be beneficial to use a Coping saw or electric Jigsaw.

SUNLITE™

INSTALLATION GUIDELINES

6. Start the second row with the leftover cut part of the last plank of the previous row. This small plank should measure at least 30cm. Otherwise, use another plank that should be cut in two. The end joints of each adjoining row should not be closer than 20cm to each other.

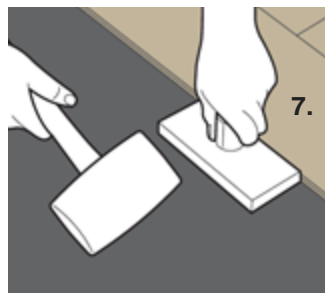


7. Click the long side of the plank into the previous row and place it tight to the short end of the previous plank with an angle of 30°. Drop the plank and gently press down the end with a rubber mallet so it firmly locks into the previous plank until both are at the same height. Make sure both planks are perfectly aligned.

NOTE: If you notice both planks aren't at the same height or are not well locked together, please follow the disassembling instructions and check if any debris stuck inside the lock is obstructing.

Helpful Hint - After finishing the installation of every row, use scrap pieces and a small hammer or rubber mallet to gently tap the planks into the click of the previous row to make sure they are tightly clicked together and make sure there is no gap between the long side of the planks installed.

NOTE: ANY GAPPING CAN COMPROMISE THE WHOLE INSTALLATION.



8. After 2-3 rows, adjust the distance to the front wall by leaving an expansion gap of 6mm. Always ensure that the end joints are staggered at least 20cm, both when in the same row as when from one row to the next one.

9. To lay the last row, position a loose board exactly on top of the last row laid. Place another board on top, with the tongue side touching the wall. Draw a line along the edge of this board to mark the first board. Cut along the edge of this board to mark the first board. Cut along this line to obtain the required width. Insert this cut board against the wall. The last row should be at least 50mm wide.



10. To create holes for pipes, measure the diameter of the pipe and drill a hole that is 20mm larger. Saw off a piece and lay the board in place on the floor, then lay the sawed-off piece in place.

DISASSEMBLING

Separate the whole row by lifting it up delicately at an angle. To separate the planks, leave them on a flat surface and slide them apart. If planks do not separate easy, lifting the closest plank to you slightly by 5-10° will assist when sliding them apart.

Sunlite™ - Installation Guidelines

Document ID: 100059

Revision No: 02

Date modified: 19/11/2018

Signature Floorcoverings Pty Ltd
ABN 45 007 172 938
PO Box 1122 Epping 3076 VIC
13 Wurundjeri Drive, Epping 3076 VIC Australia
Tel: 03 9401 0888 Fax: 03 9401 0866
www.signaturefloors.com.au

PO Box 527, Silverdale, Auckland 0944
7B Furnace Place, Silverdale, Auckland 0932
Tel: 0800 150 555
www.signaturefloors.co.nz

The logo for Signature Floors features the word "Signature" in a large, elegant, white cursive script. Below it, the word "signaturefloors" is written in a smaller, clean, white sans-serif font. A registered trademark symbol (®) is positioned to the upper right of the word "signaturefloors".