

Signature<sup>®</sup>  
signaturefloors

retreat  
Hybrid Flooring



AUSSIE SPECIES  
& TRADITIONAL OAKS

**WATER-PROOF LUXURY FLOORS  
DESIGNED FOR AUSTRALIAN HOMES**

**CARPET COURT**

**WATER PROOF  
FAMILY PROOF  
FADE RESISTANT  
HEAT RESISTANT**

*Signature*<sup>®</sup>  
signaturefloors

**retreat**  
Hybrid Flooring



**CAN YOU  
IMAGINE A  
FLOOR THAT  
PERFECTLY  
SUITS THE WAY  
YOU LIVE?**





YENGO SPOTTED CUM FEATURING WOODMIX



**RETREAT IS DESIGNED  
FOR EASY FAMILY LIVING.**

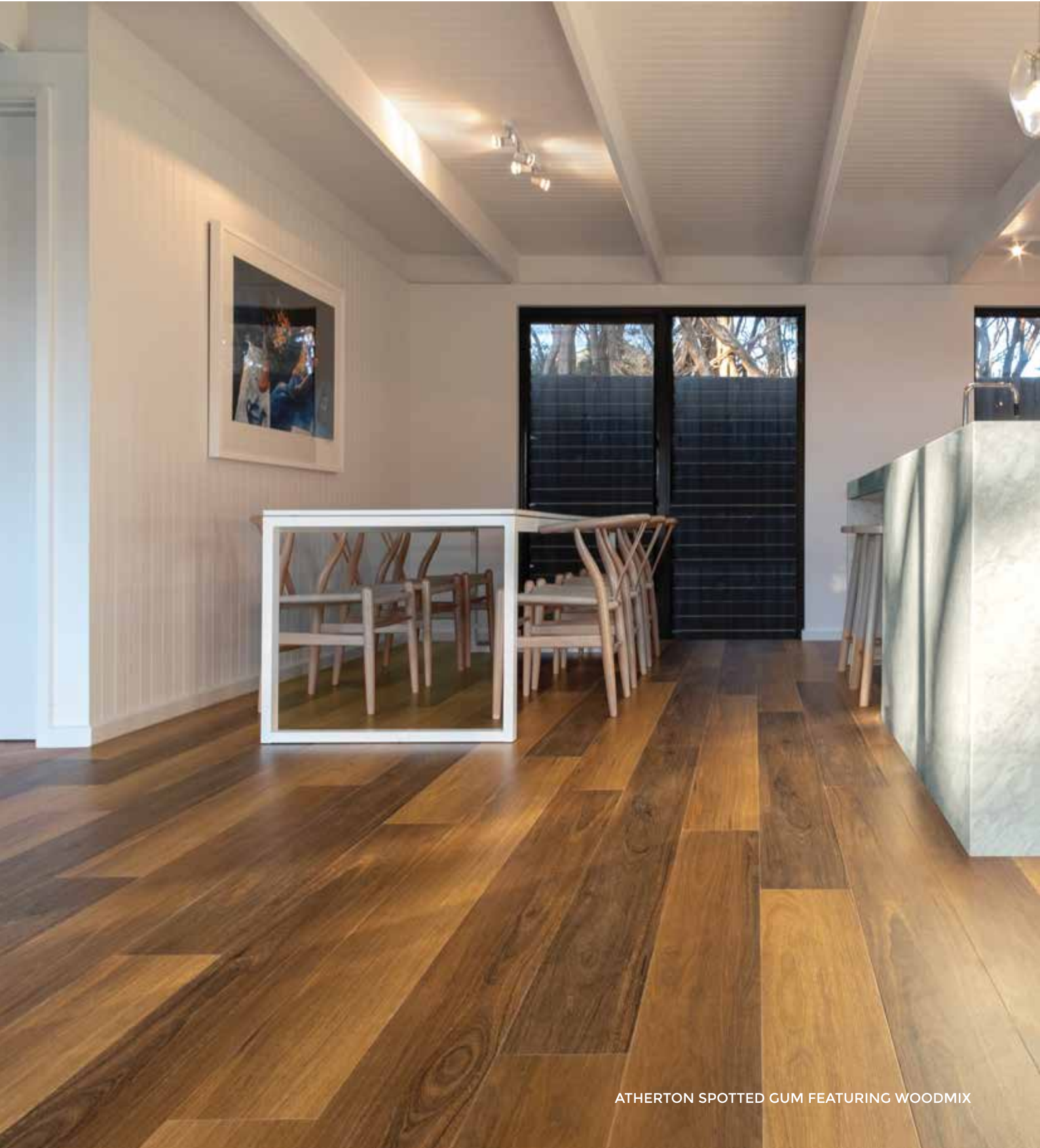
IT'S 100% WATER-PROOF SO THERE'S  
NO NEED TO WORRY ABOUT BATH TIME,  
WET DOGS OR DRIPPING KIDS.

RETREAT IS FADE-RESISTANT FOR  
THE HOTTEST OF AUSSIE SUMMERS.

RETREAT IS A TRULY STRESS-FREE  
FLOOR FOR HOW WE LIVE TODAY.



GOOD LOOKS & GREAT PERFORMANCE  
IN THE HARDEST WORKING ROOM IN THE HOME





THERE'S NO NEED TO PANIC WHEN THE GREAT OUTDOORS COME INSIDE. WET TOGS IN SUMMER ARE NO MATCH FOR RETREAT

**THE PERFECT FAMILY FLOOR**



PREMIUM QUALITY HYBRID FLOORING  
GUARANTEED FOR A LIFETIME OF ENJOYMENT



# WHAT MAKES RETREAT SO SPECIAL?



**EXTRA HEAVY DUTY**  
multi-layer quartz enhanced PUR coating has exceptional resistance to heavy foot traffic, indents & scuffs

**DEEP STRUCTURED**  
decorative layer  
true-to-life look & feel  
of premium timber

**RIGID SOLID-CORE**  
extra dense planks  
free from harmful content,  
water-proof, extra stable  
and extra sound absorbent,  
up to 80% natural limestone

**BUILT IN UNDERLAY**  
for added acoustic performance  
and installation

**SECURE INSTALLATION**  
the TIGHT-LOCK system ensures  
planks always remain flat & stable

**YOUR LIFETIME GUARANTEE**



**FLOOR WITH  
EXCEPTIONAL  
FADE RESISTANCE  
FOR TOUGH  
AUSTRALIAN  
CONDITIONS**

*Signature*<sup>®</sup>  
signaturefloors

**retreat**  
Hybrid Flooring



**RETREAT  
IS STABLE  
IN 50° HEAT.  
NO TIMBER  
FLOOR CAN  
SAY THAT!**





TARILL OAK



TOOLARA SPOTTED GUM FEATURING WOODMIX



# retreat oaks

Featuring the natural grain and texture of oak varieties, the Retreat Oaks collection creates stunning floors. Exceptionally hard wearing, Retreat Oaks are designed to suit your lifestyle in the hot Australian sun. Water-proof, fade-resistant and family-proof.



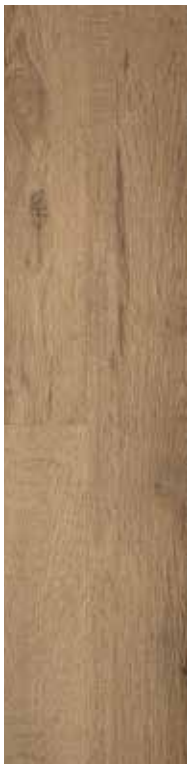
**Plank size:** 223 x 1813mm **XXL**

**Thickness:** 7mm

**Wear Layer:** 0.55mm



**Avar Oak**  
RET057**SP**



**Inger Oak**  
RET058**SP**



**Malin Oak**  
RET1773**SP**



**Tarill Oak**  
RET1770**SP**



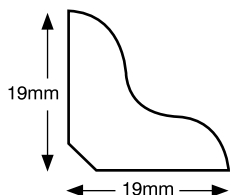
**Gunvar Oak**  
RET1774**SP**



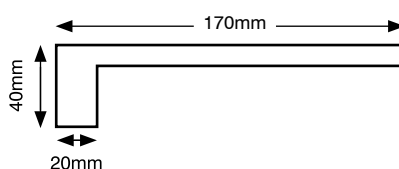
**Espen Oak**  
RET060**SP**

## Accessories:

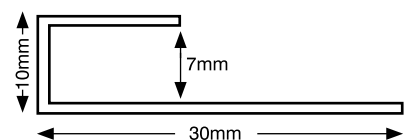
### Scotia



### Stair nosing



### Junior ends





# retreat aussie species

Celebrating our own Aussie timbers, from Blonde Tasmanian Oak to Spotted Gums, Retreat Aussie Species collection literally brings the outdoors in. The Yengo, Atherton and Toolara Spotted Gum varieties feature multi-shade planks which we describe as 'woodmix'. It's an attractive feature for your new floor.



**Plank size:** 176 x 1813mm  
**Thickness:** 7mm  
**Wear Layer:** 0.55mm



**Toolara Spotted Gum**  
 RET20524SP  
 \*WOODMIX

**Yengo Spotted Gum**  
 RET2051SP  
 \*WOODMIX

**Atherton Spotted Gum**  
 RET2050SP  
 \*WOODMIX

**Blonde Tasmanian Oak**  
 RET2060SP

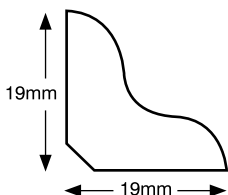
## Multi-Shade Planks

Natural timber comes in different shades from the same tree. Some ranges sort these planks so that shades are separated. Blonde Tasmanian Oak is a range with consistently light boards.

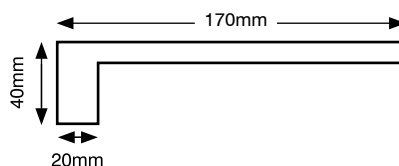
Woodmix describes the selection of all the shade varieties in a range, resulting in a multi-shade plank floor. Each box has a random selection of woodmix planks which can be subtle differences between planks or more contrasting depending on the range. Refer to the installation pictures of ranges featuring Woodmix to see the levels of contrast. Australian Species featuring Woodmix look particularly beautiful when installed.

## Accessories:

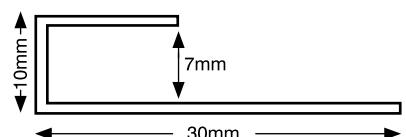
### Scotia



### Stair nosing



### Junior ends





**RETREAT  
CAN BE LAID  
DIRECTLY OVER  
MOST SURFACES  
MAKING INSTALL  
FAST & EASY**



50°  
CELSIUS  
HEAT

INGER OAK



ESPEN OAK



MALIN OAK

RETREAT CREATES ON-TREND LOOKS FOR CLASSIC & CONTEMPORARY INTERIORS





## DESIGNED FOR EASY LIVING

IT'S 100% WATERPROOF SO THERE'S NO NEED TO WORRY ABOUT SPILLS IN THE KITCHEN. A DAMP MOP AND YOUR FLOOR IS AS GOOD AS NEW.



ATHERTON SPOTTED GUM FEATURING WOODMIX

### A PERFECT FLOOR FOR ALL WET AREAS

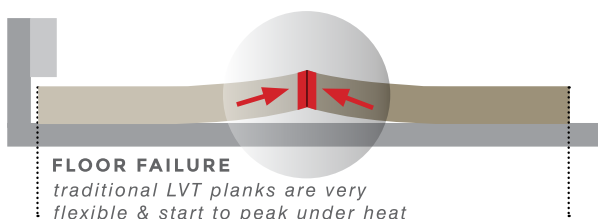
- KITCHEN, PANTRY
- LAUNDRY
- ENSUITE & FAMILY BATHROOMS
- CONSERVATORY & WINE CELLAR

KEY FEATURES	HYBRID FLOORING	LOOSELAY LVT	TRADITIONAL LAMINATE
Will not warp or deform >80 degrees	✓	X	✓
Water-proof (can be installed in bathrooms)	✓	X	X
Suitable in rooms with floor to ceiling windows	✓	X	X
Suitable for bathrooms & laundries	✓	X	X
Resistant to indentation	✓	✓	✓
Sound absorbent - BCA Acoustic Compliant	✓	X	X
Built in underlay	✓	X	X
Core is free of harmful content & plasticizers	✓	X	✓
Suitable to be laid over tiles	✓	X	✓
No acclimatisation necessary	✓	X	X
No telegraphing <sup>A</sup> (show through)	✓	X	✓
Installs in areas >400m <sup>2</sup> without transition gaps	✓	X	X
Lays directly over chipboard	✓	X	X
Fast & easy TIGHT LOCK install ('floating floor')	✓	X	✓
Can be wet & steam mopped	✓	X	X
Steam mopped	✓	X	X

<sup>A</sup> uneven floors require subfloor preparation when there is a height variation of more than 3mm over 1m \*installed with permanent adhesive

## RETREAT PERFORMS BRILLIANTLY UNDER EXTREME HEAT

### TRADITIONAL LVT



### RETREAT HYBRID FLOORING



## TECHNICAL SPECIFICATIONS

Plank Size	223 x 1813mm - Oaks 176 x 1813mm - Aussie Species
Total Thickness	7.00mm (5.50mm board & 1.50mm backing)
Wear Layer	0.55mm
Wear Layer Treatment	Quartz enhanced PUR coating
Wear Class	Commercial class 34 - <i>very heavy traffic</i>
Surface	Natural embossed, true to life timbers
Slip Resistance	P3 * <i>relates to all stock received from October 2018</i>
Edge Design	Micro V groove 4 sided
Fire Rating ISO 9239.1	Pass
Underfloor Heating	Suitable for water based systems
Planks per Box	4 pcs/box (1.617m <sup>2</sup> ) - Oaks 6 pcs/box (1.915m <sup>2</sup> ) - Aussie Species
Installation Method	Tight Lock - no underlay - min. floor prep* required
Warranty	Lifetime Residential, 15 Year Commercial



### EASY TO INSTALL

Retreat uses the TIGHT LOCK Installation method. No glue is used. Planks CLICK together tightly on the long side and DROP into place on the short side, to give a water tight seal that doesn't warp or lift.

### PERFORMANCE

Retreat solid-core planks feature a multi-layer quartz enhanced urethane coating which provides exceptional resistance to heavy foot traffic, indents, scratches and scuffs. They provide excellent acoustic benefits making them ideal where noise dampening is needed. In addition, Retreat floors are water and family proof as well as fade and heat resistant, making it an exceptional flooring product.

### PROTECT YOUR INVESTMENT

Whilst this product is resistant to the harshest environments, it is not scratch proof. To ensure you get the best of your floor, place felt stoppers on the bottom of all furniture.

### SUB-FLOORS

Retreat can be installed over most surfaces such as tiles with grout lines, particleboard and chipboard. Because planks are thick and rigid, there's no 'show through' (telegraphing). \* Retreat solid-core planks do not require acclimatisation before laying, making installation, quick, clean and easy. *\*uneven floors require floor preparation. Please refer to our installation instructions.*

### SAFE & SUSTAINABLE

The solid-core of Retreat is free from ortho-phthalates, plasticisers and other harmful content. The TIGHT LOCK installation method is chemical, glue and dust free. Formaldehyde rating E1 (Reach - CE - PROP 65 - Floorscore - VIC A+ - DIBT)

### PLASTICISER MIGRATION

Rubber mats and rubber furniture protectors will cause plasticiser migration onto your floor. To ensure this doesn't happen, you can not put any rubberised products onto your floor for an extended period of time.



•can be laid over tiled floors •sub-floor should be clean & dry •installs directly over irregularities •can be laid over chipboard and tongue & groove flooring provided sub-floor is prepared in accordance with AS 1884 2012 •uneven floors require sub-floor preparation where there is a height variation more than 3mm over 1m •existing floors cannot be cushioned and need to be adhered to the sub-floor. Please refer to our installation instructions.



MALIN OAK

**retreat**  
Hybrid Flooring

*Signature*  
signaturefloors®

au 03 9401 0888  
nz 0800 150 555  
[signaturefloors.com.au](http://signaturefloors.com.au)  
[signaturefloors.co.nz](http://signaturefloors.co.nz)

FRONT PAGE: TOOLARA SPOTTED GUM FEATURING WOODMIX

**Terms & Conditions:** Specifications are subject to manufacturing tolerances and may be changed without prior notice. Dye lots may vary in colour from sample and between production lots. All product purchases are subject to Signature Floorcoverings Standard Terms & Conditions of Sale. Please refer to our Installation Guideline, Maintenance Manual and Warranty Document for further clarification.

*This warranty is in addition to and does not affect your statutory rights. Our goods come with guarantees that cannot be excluded under the Australian Consumer/NZ Consumer Guarantees Act 1993. You are entitled to a replacement or refund for a major failure and compensation for any other reasonably foreseeable loss or damage. You are also entitled to have the goods repaired or replaced if the goods fail to be of acceptable quality and the failure does not amount to a major failure.*

Please refer to our warranties on: [www.signaturefloors.com.au](http://www.signaturefloors.com.au) [www.signaturefloors.co.nz](http://www.signaturefloors.co.nz) 9/2019©