

**ERA**



ERA MODERN 93

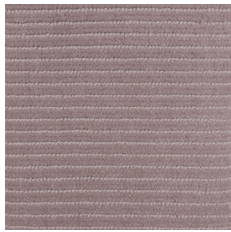
au 1800 150 554  
nz 0800 150 555  
[signaturefloors.com.au](http://signaturefloors.com.au)  
[signaturefloors.co.nz](http://signaturefloors.co.nz)

*Signature*

ERA



MOMENT  
31



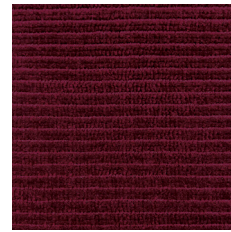
SPAN  
63



ETERNAL  
64



TERM  
14



EVENT  
16



QUANTUM  
65



YEAR  
27



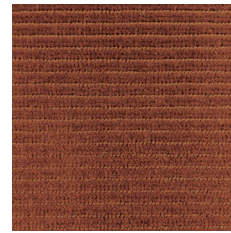
CHAPTER  
24



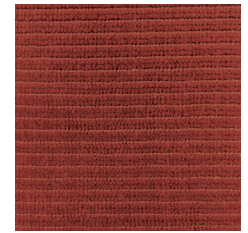
SEASON  
83



VINTAGE  
87



INTERVAL  
12



OCCASION  
13



ORIGIN  
77



CENTENNIAL  
73



DECADE  
75



TIME  
78



EPOCH  
76



JUNCTURE  
74



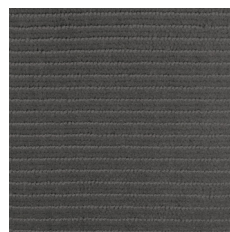
LONGEVITY  
38



MODERN  
93



PHASE  
44



CLASSICAL  
97



MILLENNIAL  
94



GENERATION  
92



STAGE  
91



ARCHAIC  
49



AEON  
95



AGES  
96



CHRONOLOGY  
98



CENTURY  
100

**ERA**



ERA YEAR 27

**SPECIFICATIONS**

<b>Product</b>	Era
<b>Product Category</b>	Woven Carpet
<b>Construction</b>	1050tex/4ply
<b>Yarn/Fibre</b>	80% New Zealand Wool, 20% Nylon
<b>Carpet Weight</b>	1850g/m <sup>2</sup>
<b>Carpet Width</b>	400cm
<b>Broadloom Match</b>	Set
<b>Design Width</b>	1cm
<b>Design Length</b>	1cm
<b>Pitch/Beat Up</b>	N/A
<b>Pile Height</b>	7mm Cut, 6mm Loop

**CUSTOM OPTIONS**

<b>Colour</b>	200m <sup>2</sup> minimum
<b>Installation Methods</b>	Dual Bond Conventional Lay Comfilay underlay recommended

**PERFORMANCE**

<b>Backing</b>	Polypropylene
<b>Traffic</b>	Commercial Heavy Duty
<b>Fire Rating ISO 9239.1</b>	>4.5kw/m <sup>2</sup> Critical Radiant Flux
<b>Electrostatic Propensity</b>	<2.2kv Suitable all areas

All edges to be cut & seam sealed prior to installation.

Cut pile carpets, particularly 'plush pile' will in some circumstances exhibit the condition known as 'shading, watermarking or pile reversal'. A cut pile carpet that has 'shaded' will show areas lighter or darker than the surrounding carpet pile. The variation is caused by the reflection of light from pile tufts which come to lay in different directions. It does not affect the wear or durability of the carpet and since it is beyond the control of the manufacturer, it is not recognised as a manufacturing flaw or fault.

**SUSTAINABILITY**

Green Label Plus

**TECHNICAL DOCUMENTS**

- [Installation Guide](#)
- [Maintenance Guide](#)
- [Recommended Adhesives](#)

Terms & Conditions: Specifications are subject to manufacturing tolerances and may be changed without prior notice. Dye lots may vary in colour from sample and between production lots. All product purchases are subject to Signature Floorcoverings Standard Terms & Conditions of Sale. This product is to be installed by an experienced installer. Please refer to our Technical Information Manual, Maintenance Guide and Warranty Guide for further clarification.

Disclaimer: This spec sheet is presented for informational purposes only. Every effort is made to ensure that product images are of an accurate representation of the product. However, they are for illustrative purposes only and colour variations may occur in actual product and between dye series. Please consult your commercial sales consultant for further information.