

# INSTALLATION GUIDELINES

## ACOUSTIC 6.0 - 88 PLANKS



*Signature*<sup>®</sup>  
signaturefloors

# ACOUSTIC 6.0 – 88 PLANKS

## INSTALLATION GUIDELINES

Thank you for choosing Signature flooring. When properly installed and cared for, your new flooring will be easy to maintain and will keep its great look for years to come.

Please read all the instructions before you begin the installation. Improper installation will void warranty.

### I. GENERAL PREPARATIONS

TOOLS REQUIRED: Spacers, rubber mallet, ruler, pencil, tape measure, utility knife, power saw, jig saw and a 2M straight edge.

- Prior to installation, inspect material in daylight for visible faults/damage, including defects or discrepancies in colour or shine; check the edges of the flooring for straightness and any damage. Claims on surface defects will not be accepted after installation.
- It is preferable to lay boards perpendicular to the window, following the direction of the main source of light. For the best result, make sure to always work from 3 to 4 cartons at a time, mixing the planks during the installation.
- Check if subfloor/site conditions comply with Australian Standards AS 1884:2021 and the specifications described in these instructions.
- When handling before installation, exercise care. Store cartons flat, never on the edge.
- In most cases, our hybrid product does not need to be acclimatised, however, if the boxes were exposed to extreme temperatures of 5°C or over 50°C over 2 hours within the 12 hours before the installation, acclimatisation is required, in this case keep the boxes in room temperature between 15-35°C for at least 12 hours, unopened. The room temperature must be maintained consistent between 15-35°C before and during the installation.
- Flooring should only be installed in temperature-controlled environments. It is necessary to maintain a constant temperature of 15-35°C before and during the installation. If using portable heaters, it is recommended that the floor temperature be checked.
- After installation, make sure that the flooring is not be exposed to temperatures less than 5°C or greater than 50°C.
- For temperature controlled commercial spaces or large open plan floor areas of up to 400m<sup>2</sup> can be installed without expansion trims.
- For open plan residential installations, a maximum of 20m in length, 15m in width is recommended.

Installations connected through several living areas via a hall or standard doorway may require compartmentisation by use of expansion trims to facilitate raft. Please refer to your Signature representative for clarification or recommendation of trim placement.

- Three of the most common causes of flooring failure are pinch points from tightly fitted skirting/scotia, insufficient perimeter expansion and uneven subfloors. By following our recommendations, you will ensure the flooring will act as expected and remain trouble free for its lifetime. Signature Floors engineered hybrid flooring is an interior product only and must not be installed outdoors. Suitability for areas such as garages, sunrooms should be confirmed with your Signature Floors representative.

### II. SUBFLOOR INFORMATION

- The flooring can be installed over most existing hard surface floor coverings, provided that the existing floor is structurally sound, dry and flat to a maximum of +/- 3mm in 2M span in any direction. Use of a 2M straight edge is recommended. Refer to Figure 1.
- You can lay hybrid flooring over subfloors with depressions, grooves, grout joints that do not exceed 4mm in width and 4mm in depth, anything greater must be filled with patching and/or levelling compound.
- Substrates must be free from excessive moisture or alkali. Remove dirt, paint, varnish, wax, oils, solvents, any foreign matter and contaminates.
- Do not use products containing petroleum, solvents or citrus oils to prepare substrates as they can cause staining and expansion of the new flooring.
- Although this floor is waterproof, it is not aimed to be used as a moisture barrier. The subfloor must be dry, concrete moisture vapor emissions should not exceed 3.63 kg (ASTM F1869) / 80 % RH (ASTM F2170) with a PH limit of 9 / max. 2.5 % moisture content (CM method).
- This product is also not to be installed in areas that have a risk of flooding such as saunas or outdoor areas.
- Existing sheet vinyl floors should not be heavily cushioned and not exceed more than one layer in thickness. Soft underlayment and soft substrates will diminish the products inherent strength in resisting indentations & lock integrity.

# ACOUSTIC 6.0 – 88 PLANKS

## INSTALLATION GUIDELINES

### WOOD SUBFLOORS

- If this flooring is intended to be installed over an existing wooden floor, it is recommended to repair any loose boards or squeaks before you begin the installation. Nail or screw every 15 cm along joists to avoid squeaking.
- We recommend laying the flooring crossways to the existing floorboards.
- All other subfloors - plywood, OSB (Oriented Strand Board), particleboard, chipboard, wafer board, etc. must be structurally sound and must be installed following their manufacturer's recommendations. If any of the aforementioned subfloors have a rough or course surface the installation of 200-micron builders plastic is recommended to allow the product to raft and not be caught on the rough/course surface.
- Timber subfloor should be structurally firm and flat, avoid installations where subfloor has bounce/spring as this will disengage the locking system.

### CONCRETE SUBFLOORS

- Existing concrete subfloors must be fully cured, at least 60 days old, smooth, permanently dry, clean, and free of all foreign material such as dust, wax, solvents, paint, grease, oils, and old adhesive residue. Curing agents and hardeners could cause bonding failure and should not be used. In accordance with Australian Standards AS 1884:2021, ASTM F2170 a moisture test must be performed to ensure the concrete slab does not exceed 80% relative humidity.

### DO NOT INSTALL OVER

- Any type of carpet.
- Existing cushion-backed vinyl flooring.
- Floating floor of any type, loose lay, and perimeter fastened sheet vinyl.
- Hardwood flooring/wood subfloors that lay directly on concrete or over dimension lumber or plywood used over concrete.

### IMPORTANT NOTICE

In-floor Hydro Heat: Flooring can be installed over 12mm embedded hydro heat using the floating method. Maximum operating temperature should never exceed 27°C. Use of an in-floor temperature sensor is recommended to avoid overheating.

- Turn the heat off for 24 hours before, during and 24 hours after installation when installing over hydro heated subfloors.
- Before installing over newly constructed hydro heat systems, operate the system at maximum capacity to force any residual moisture from the cementitious topping of the hydro heat system.
- Make sure that the temperature in the room is maintained consistent between 15-27°C before and during the installation.
- Floor temperature must not exceed 27°C.
- Once the installation has been completed, the hydro heating system should be turned on and increased gradually (3-degree increments) every 24 hours a maximum of 27°C.
- Refer to the hydro heat system's manufacturer recommendations for additional guidance.

**Warning:** Electric heating mats are not recommended.

**Stair Installation:** To maintain safety and product performance all stairs should be glued direct to tread and riser.

- Stairs should be installed with a suitable adhesive such as Bostik Ultra-set, or an adhesive of similar structure as recommended and warranted by the adhesive manufacturer. Use of liquid nails is not recommended.
- Adhesive should be applied with a 5mm notch trowel with 100% coverage of tread and riser.
- Surface should be firm, flat and free from any contaminants including paint or chemical residue.
- Remove the underlay from the back of the plank before installation for best adhesion.
- Ensure stair nosing is fitted flush with stair tread edge.

### III. INSTALLATION

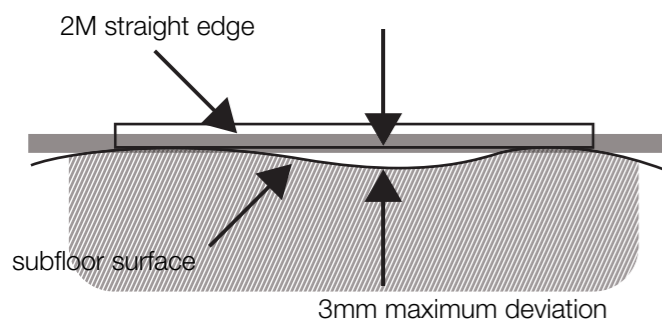
- Remove baseboard, quarter-round moldings, wall base, appliances and furniture from room. For best results, door trim should be under-cut to allow flooring to move freely without being pinched. After preparation work, sweep and vacuum the entire work area to remove all dust and debris.
- You must always ensure you leave minimum 10mm expansion gap between walls and fixtures such as pillars, stairs, etc. These gaps will be covered with trim moldings after the floor is installed.

# ACOUSTIC 6.0 – 88 PLANKS

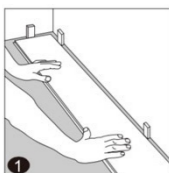
## INSTALLATION GUIDELINES

- Window coverings are recommended for all areas during sunlight hours.
- Whenever possible, plan the layout so that the joints in the planks do not fall on top of joints or seams in the existing substrate. The end joints of the planks should be staggered a minimum of 20 cm apart. Do not install over expansion joints. Avoid installing pieces shorter than 30 cm at beginning or end of rows.
- Do not install your kitchen cabinets directly over your floor.
- Decide the installation direction. It is recommended to install the boards perpendicular to the window following the direction of the main source of light.
- Measure the area to be installed: The board width of the last row shall not be less than 50mm in width. If so, adjust the width of the first row to be installed. In narrow hallways, it is recommended to install the floor parallel to the length of the hall.
- **UNDERLAY:** Hybrid flooring comes with a pre-attached underlay; therefore no additional underlay is allowed. Use of an additional underlay will void the warranty.

Figure 1:



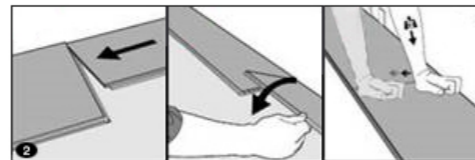
1. **First row, first plank:** After thoroughly cleaning the subfloor, you should begin laying from left to right. Position the first plank so that grooved edge is facing you. Place the floorboard 10mm from the left wall. Use spacers between the wall and the floorboard.



2. **First row, second plank:** Place the plank gently and close to the short side of the previous plank. Fold down the plank starting from the opposite

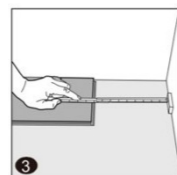
corner of the plank to the closest corner (as shown on the drawing), press down slightly along the short side of the plank just installed so it firmly locks into the previous plank until both are at the same height. Make sure both planks are perfectly aligned. It is crucial that the short edges of two connecting planks are correctly aligned, and the hand contacts the plank in the area directly above the short edge, allowing for a correct locking.

**Note:** Pressing the area close to the short edge, but not directly above it may result in permanent damage to the joint. Continue installing the first row until you reach the wall on the opposite wall



**IMPORTANT:** If you notice both planks aren't at the same height or are not well locked together, please follow the disassembling instructions at the bottom of the page, disassemble and check if any debris stuck inside the lock is obstructing. Failure to properly line up the end joint and attempting to force it in while out of alignment could result in permanent damage to the end joint.

3. **First row, last plank:** At the end of the first row, leave an expansion gap of 10mm to the wall and measure the length of the last plank to fit.



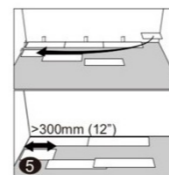
4. **To cut the plank:** Use a simple utility knife and ruler, and with the top side facing up, cut heavily and several times on the same axis. The knife will not go through the surface but make a deep cut. You can then lift one half of the plank using your other hand to hold down the second placing it very close to the cut. The plank will split naturally. Use a saw or guillotine on sides.



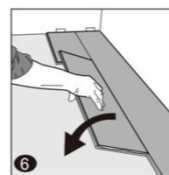
# ACOUSTIC 6.0 – 88 PLANKS

## INSTALLATION GUIDELINES

5. **Second row, first plank:** Start the second row with the leftover cut part of the last plank of the previous row. This small plank should measure at least 30 cm. Otherwise, cut a new plank in half and use it to begin the second row. The end joints of each adjoining row should not be closer than 20 cm to each other. Whenever practical, use the piece cut from the preceding row to start the next row.

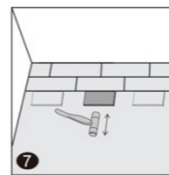


6. **Second row, second plank:** Click the long side of the plank into the previous row and place it tight to the short end of the previous plank with an angle of 25-30 degrees. Drop the plank and gently tap on the end with a rubber mallet and tapping block so it firmly locks into the previous plank until both are at the same height. Make sure both planks are perfectly aligned.

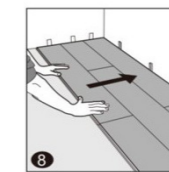


Place the panel gently and close to the short end of the previous panel and fold it down in a single action movement.

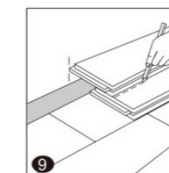
7. **After finishing the installation of every row:** Use scrap pieces (male on female) and a rubber mallet to gently tap the planks into the click of the previous row to make sure they are tightly clicked together and ensure there is no gap between the long side of the planks installed. Any gapping can compromise the whole installation.



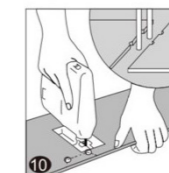
8. **Tip:** After the first 2-3 rows of planks are installed; they should be checked with a string line to ensure that rows are still running straight. If they are not, it could be that the starting wall has some irregularities that caused bowing in the installation. If so, the starting row of planks may have to be scribed and re-trimmed to account for any unevenness in the wall. This can be done without having to disassemble the beginning rows.



9. **To lay the last row:** Position a loose board exactly on top of the last row laid. Place another board on top, with the tongue side touching the wall. Draw a line along the edge of this boards, to mark the first board. Cut along this line to obtain the required width. Insert this cut board against the wall. The last row should be at least 50mm wide. The spacers can then be removed.



10. **Holes for pipes:** Measure the diameter of the pipe and drill a hole that is 12mm larger. Saw off a piece as shown in the figure and lay the board in place on the floor. Then lay the sawed-off piece in place.



11. **Door molding and skirting:** Lay a board (with the decorative side down) next to the door molding and saw as shown in the figure. Then slide the floorboard under molding.



# ACOUSTIC 6.0 – 88 PLANKS

## INSTALLATION GUIDELINES

### IV. FINISHING THE INSTALLATION

Replace molding or wall base, allowing slight clearance between the molding and the planks. Nail the molding to the wall surface, not through the flooring. At doorways and at other areas where the flooring planks may meet other flooring surfaces, it is preferable to use a “T” molding, or similar, to cover the exposed edge but not pinch the planks. Leave a 10mm gap between the planks and the adjoining surface.

**Note:** Skirting/molding should not be forced down on top of flooring under any circumstances. This can cause a pinching affect, restricting product movement and void warranty.

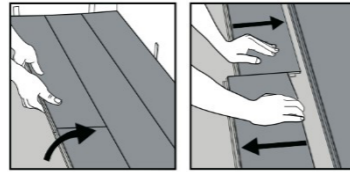
- Scotia and skirting should be fixed to the wall, not be fixed to flooring.
- Silicone/sealant should not be used to seal or conceal gaps. This can cause a pinching effect restricting product movement and void warranty.

### V. MAINTENANCE

- Sweep or vacuum daily using soft bristle attachments.
- Clean up spills and excessive liquids immediately.
- Damp mop as needed and use cleaners recommended for vinyl flooring.
- The use of residential steam mops on this product is allowed. Use at lowest power with a suitable soft pad, do not hold a steam mop on one spot for an extended period of time. Refer to the steam mop’s manufacturer instructions for proper usage.
- Use proper floor protection devices such as felt protectors under furniture.
- Place a walk-off mat at outside entrances to reduce the amount of dirt brought into your home. Do not use mats with a latex or rubber backing since these backings can cause permanent discoloration.
- Do not use abrasive cleaners, bleach, or wax to maintain the floor.
- Do not drag or slide heavy objects across the floor.

### VI. DISASSEMBLING

Separate the whole row by lifting it up delicately at an angle. To separate the planks, leave them flat on the ground and slide them apart. If planks do not separate easily, you can slightly lift the planks (5°) when sliding them apart.



### Acoustic 6.0 - 88 Planks - Installation Guidelines

Revision No: 05  
Date modified: 09/08/2023

Signature Floorcoverings Pty Ltd  
ABN 45 007 172 938

PO Box 1122, Epping VIC 3076  
13 Wurundjeri Drive, Epping VIC 3076  
Tel: 1800 150 554  
[signaturefloors.com.au](http://signaturefloors.com.au)

15 Bath Street, Parnell Auckland 1052 New Zealand  
Tel: 0800 150 555  
[signaturefloors.co.nz](http://signaturefloors.co.nz)