

SIGNATURE



MIRAMIRANG

Signature
signaturefloors

Miramirang

ABOUT US

Signature Miramirang is an Indigenous Supply Nation Certified business that supplies flooring solutions to corporate and government organisations.

We seek to provide innovative and flexible flooring requirements including broadloom carpets, carpet tiles, vinyl flooring, hard floors, and custom carpet to the marketplace while connecting with other Indigenous businesses and services. Signature Miramirang aims to engage with the wider Indigenous community to work towards creating a deeper awareness

of culture, fostering opportunities, and advancing reconciliation.

Formed through the partnering of wholly Indigenous owned business Miramirang, together with Signature Floors, a business with over 35 years specialist experience within the Australian marketplace are in the process of becoming a fully certified Supply Nation business. A third-party accreditor, Supply Nation verifies and audits Indigenous businesses to ensure the highest standards of company structures and ownership are met.



MESSAGE FROM OUR MANAGING DIRECTOR



RUBY HUNTER

Ruby Hunter is an Indigenous woman of Dharawal descent. She was born on Gadigal Country but grew up and currently resides on Gubbi Gubbi Country in South East Queensland where she is raising her own family.

With a degree in commerce from Monash University, Ruby has 15 years experience in the fashion industry that spanned throughout Australia, Asia, and Europe. On returning to Australia, she undertook a career shift that saw her working on research for Indigenous projects as well as Indigenous stakeholder engagement.

With three children of her own, Ruby is passionate about Indigenous education and literacy. It is her belief that education and opportunity are the keys to eliminating the disparity between Indigenous and non-Indigenous Australians, and provides the next generation the tools to shape positive Indigenous outcomes for the future. By naming her business Miramirang, which means 'First' in Dharawal language, it was symbolic in representing many firsts in her story – the first generation to graduate university proudly wearing an Indigenous stole, and a first opportunity at entrepreneurship and the ability to give back to community.



LAND AND SEA CONNECTIONS

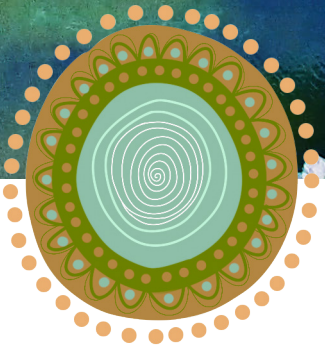
The piece is called 'Land and Sea Connections', with the artist finding inspiration in the life journey of Signature Miramirang's Indigenous partner. It represents the connection between the land and sea, living in harmony with the seasons and maintaining a balance between spiritual, social and family connections. The coastal regions the artwork represents are among the most densely populated parts of Gubbi Gubbi Country, rich in terrestrial and marine food sources, they provided good places for our old people to live, camp and hunt and continue to supply everything needed to live a nourished life feeling content and centered to the land and sea. In this Artwork you can see a variety of landscapes from surf washed sandy shores of the coast to the tidal reaches of the Pumicestone Passage, up to the high rainforest dominated by bunya pines and native shrubs. There are also journey lines to represent the pathways taken through life, connecting places and people and an intertwining of culture with career. The journey lines also pass through meeting places to symbolise new relationships and opportunities and are connected by moving water as a sign of life to represent family. The coastal dunes and grassy mountains symbolise wisdom, strength and resilience as well as native pig face, honeysuckle banksia and casuarina to represent health and prosperity for family and friends.

ARTWORK BY SHERI SKELE



ACKNOWLEDGEMENT OF COUNTRY

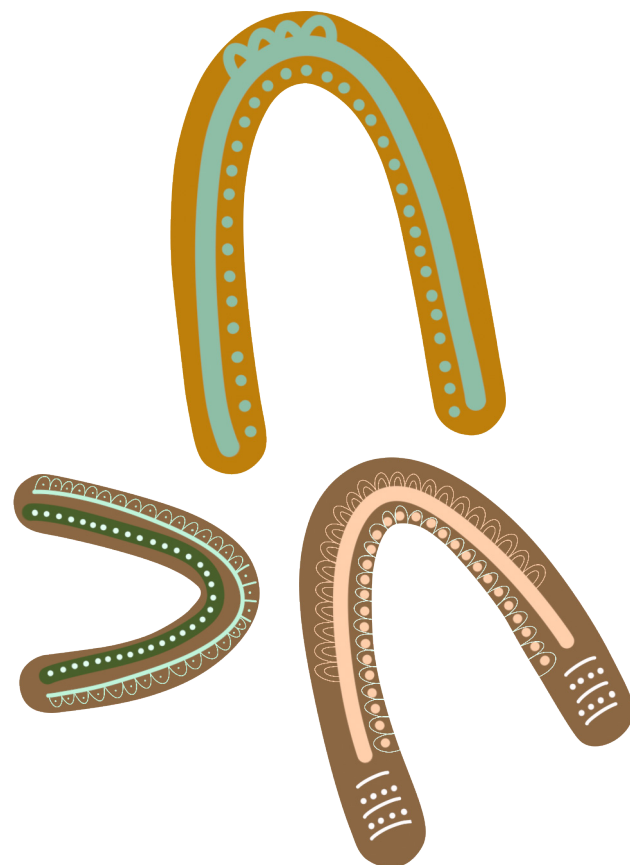
We acknowledge the Traditional Owners of the Country on which we work and live and recognise the deep and continual cultural and spiritual connection to lands, waters and communities. We pay our respects to their Elders, past and present and extend that respect to all Aboriginal and Torres Strait Islander People.



**PARTNERING WITH RESPECT,
HONOURING CULTURE AND
EMPOWERING FUTURES**

Our Indigenous Engagement Plan was designed to ensure meaningful outcomes within the areas of employment and opportunities, cultural awareness and community involvement.

These pillars are essential in moving forward toward reconciliation in Australia and through education, respect, opportunity and cooperation we can help close the gap between Indigenous and Non-Indigenous Australians.



EMPLOYMENT AND OPPORTUNITY OUTCOMES

provide employment, training, and position growth opportunities for Indigenous people within our organisation. Also strive to engage with other Indigenous suppliers and services both within our business and in the delivery of our products and services to our customers. This can be achieved through engaging with Indigenous graphic designers, artists, the purchasing of consumable products within our business while, where possible working with Indigenous installers and trades when servicing our customers.

AWARENESS OUTCOMES To increase cultural awareness and understanding within the company by providing education and training to all employees working within the business. This includes both understanding our customers reconciliation aims and Indigenous business sector requirements while growing a respect and understanding of Indigenous culture, customs, and people within our community.

COMMUNITY AND RELATIONSHIP OUTCOMES

Encourage and develop meaningful relationships within the Indigenous community and support education initiatives to drive positive future change. Form partnerships with Indigenous organisations focussed on education and literacy, contributing through a financial donation scheme and product in kind.



CARPET TILES / PLANKS



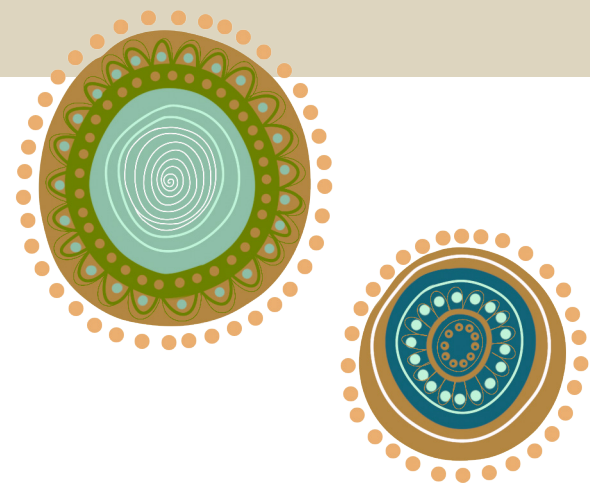
WOVEN BROADLOOM CARPET



ENGINEERED TIMBER



VINYL PLANKS



OUR PRODUCTS

Our strength lies in offering our customers some of the industry's most colour-rich, flexible, and sustainable products in an accessible way.

Signature Miramirang offers a comprehensive portfolio of flooring products that accommodate a broad spectrum of client needs. Customers benefit from a streamlined project experience from planning to execution with all stocked products under one roof.





WORKPLACE
WESTPAC
NEW SOUTH WALES



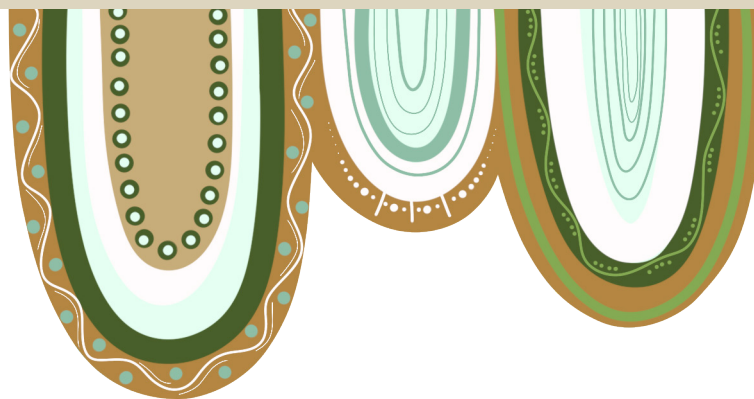
EDUCATION
STRADBROKE PRIMARY SCHOOL
SOUTH AUSTRALIA



WORKPLACE
NSW GOVERNMENT
SYDNEY



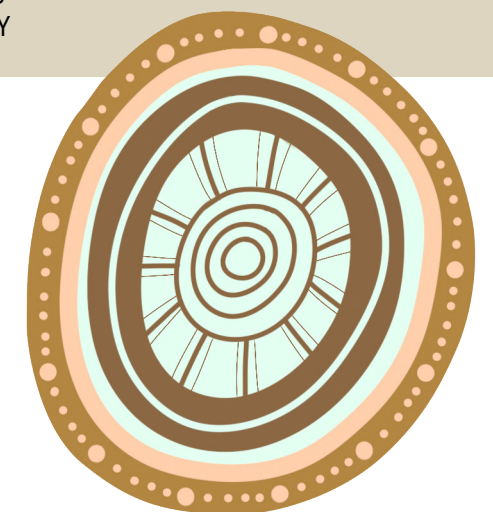
RETAIL
ADIDAS
SYDNEY



INDUSTRY SEGMENTS

Our products meet the design needs and operational challenges of many industry segments including base builds, commercial, education, hospitality, and healthcare to retail and multi-residential. We stock the biggest range of highlight colours in the world.

We support architects, designers, developers, and building contractors who prioritise spaces that promote health, wellbeing, and productivity. Our colour-rich, flexible, durable, and sustainable flooring options are tailored to tight timelines and budget constraints, offering a streamlined approach to executing your vision.



SUSTAINABILITY



Declare.

circul8
LOCAL RECYCLING INITIATIVE

Resi Loop FOUNDING MEMBER

ECONYL®
REGENERATED NYLON

CONSTANT IMPROVEMENT DRIVES US EVERYDAY

Signature Floors Australia is a certified carbon neutral organisation by Climate Active – making choices and changes to ensure the businesses carbon emissions are equal to net zero. Awarded to businesses and organisations that have achieved a state of net zero emissions, otherwise known as carbon neutrality. In addition, the first Australian organisation to receive GreenTag® Certification for carpet tiles. Signature Floors is also proudly one of fifteen leading suppliers of resilient floorcoverings who have committed to providing support for ResiLoop. As a founder member of Australia's first national stewardship scheme for resilient flooring.

Manufacturers can no longer maintain processes that deliver the best bottom-line results, nor can they cling to old habits. Signature Floorcoverings adapts to this changing market by partnering with global factories that meet our strict sustainability requirements. Without committing to any one type of equipment, our products are produced with the latest sustainable technologies.

To improve the sustainability of our manufacturing process, we currently work with industry accredited bodies rather than create our own in-house standards. While the road to complete sustainability is a long one, the journey has begun. What's more, it's our goal as one of

Australia's sustainable flooring companies to take the lead in delivering the latest initiatives for the market.

Some of our certifications, labels and green initiatives include:

- Take back program and local carpet tile recycling through Circul8
- GreenTag® Green Rate Level A certified carpet tiles and vinyl planks
- Declare labels
- Environmental Product Declarations Energy efficiency and improved insulation courtesy Comfi Bak® and Thermo Bak®
- FloorScore® certified vinyl planks
- Low VOC
- Products for Green Star, Living Building Challenge and WELL projects
- 48 recycled PET bottles per m² of Comfi Bak® carpet tiles



“Diverting materials from landfill aligns with ANZ’s target to reduce their environmental footprint. We were delighted to participate in an initiative that supports our environmental targets while also contributing to positive social impacts more broadly.”

– Duncan Sinclair

LAUNCH HOUSING RISING TO THE CHALLENGE WITH CIRCUL8: A LOCAL RECYCLING INITIATIVE

In late January 2023, Gray Puksand, reached out to Signature Floors inquiring about the possibility of utilising old sample stock and discontinued carpet tiles for the Launch Housing project. Launch Housing, an organisation dedicated to providing emergency shelter, crisis accommodation, and support to those experiencing homelessness in Melbourne, partnered with Gray Puksand to design their Collingwood hub office to create an inspiring space to connect their clients, values and culture.

Debra Longin, Lead Designer, Associate at Gray Puksand “I had often wondered what happened to all those full sized samples in our industry. I contacted Sharon at Signature Floors to see if these left over samples were available somehow and if we could repurpose this surplus with an inventive design-led approach to sustainable design”. Sharon at Signature Floors commented “we were really excited to meet the challenge, it’s not something we had tried before in this way”.

The designers were particularly interested in exploring an entire floor layout utilising second hand, discontinued tiles and other repurposed materials to create this energetic and colourful design for Launch Housing. This inquiry coincided with Signature’s ongoing Circul8 program, which focuses on sustainability and repurposing flooring materials. Remarkably, Signature had recently presented their Circul8 programme to ANZ’s Design Director, who expressed interest in partnering with Signature to repurpose surplus carpet tiles from their Dorcas Street location. The timing aligned perfectly with the sustainability goals of both organisations, preventing waste from going to landfill and extending the product life cycle.



THE COLLABORATION

The Signature team, collaborating with Gray Puksand, evaluated Signature's short-end stock, comprising a mixture of 110 product SKUs. These products were categorised based on colour blends to align with Gray Puksand's finishes schedule and design intent. During the material order process, Signature meticulously organised and palletised the short ends, surplus, and carpet tile seconds into the respective carpet code categories, streamlining the installation process for on-site flooring contractors.

THE INSTALLATION

“As the cost to do a dry lay with the tiles and planks was out of the budget, we had to work closely with Progrind to ensure they understood the randomness of the design intent. We are truly pleased that it has all come together the way it has, showcasing the successful collaboration and dedication of everyone involved in bringing this unique flooring concept to life.”

“There was initial pushback from the flooring contractors as they grappled with how to provide a competitive install rate, given there were so many product SKUs, a mix of carpet tiles and planks, and no firm floor layout plan. They were concerned with the difficulties in trying to pull off a random lay pattern like this successfully and that the installation time would blow out.”

– Sharon Morton,
Signature Floors

THE RESULT

The Launch Housing Head Office Collingwood project became a testament to sustainable design and resourcefulness. The “patchwork quilt effect” created from the mix of Signature Floors' short ends and discontinued lines, along with repurposed and surplus tiles from ANZ, not only met sustainability objectives but also lent an energetic and colourful ambiance to different work and activity zones within the office space. The designs striking and playful design outcome challenges the misconception that sustainable design is inherently more expensive. Good sustainable design doesn't need to “cost the earth”. Launch Housing's workplace showcases the project teams dedication to eco-friendly design and cost-effective sustainability.

– Debra Longin, Associate Gray Puksand

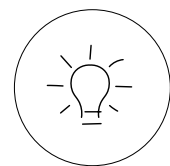


STUDIO SIGNATURE DIO

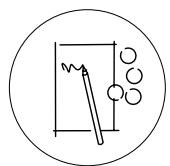
Our reputation as an innovative flooring company is bolstered further by the Signature Studio and its team of experienced textile designers. Providing custom carpet solutions, the Studio enables architects and designers working on high-end commercial projects to create spaces that improve user experience and boost comfort, wellness, and health, all while offering improved acoustic support and user satisfaction.

The Studio is quite literally a space for ideas and exploration. Clients and customers also benefit from an end-to-end solutions partnership, which means our team of experts offer support and are available throughout, from ideation to execution.

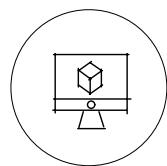
THE WAY WE WORK



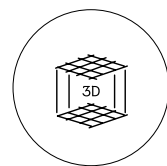
DESIGN BRIEF/
INSPIRATION



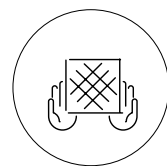
CONCEPT
DESIGN



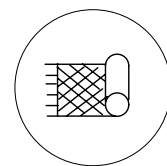
FLOOR
LAYOUT



VISUALISATION



HAND
TRIAL

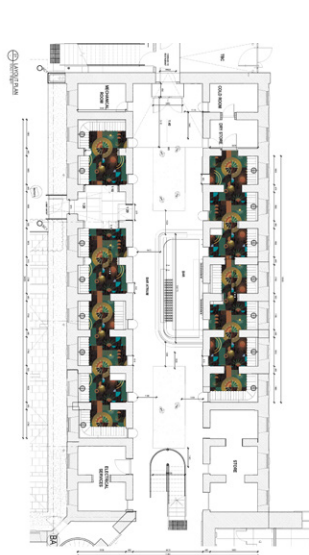


INSTALLATION

CONCEPT DESIGN



FLOOR LAYOUT



VISUALISATION



HAND TRIAL



INSTALLATION



KATE BANAZI
SIGNATURE STUDIO



LOCALLY
DESIGNED FOR
THE AUSTRALIAN
MARKET



Signature Studio's Melbourne based design team works with Australian artists and talent, across an array of design fields, transforming their works of art into floorcoverings that celebrate the ethos of each artist in a curated selection of flooring mediums and colour schemes.

MEGAN PARK
SIGNATURE STUDIO



MARICOR MARICAR
SIGNATURE STUDIO





Supply Nation



Confirmation of Supply Nation Certification

This is to certify that

Signature Miramirang Pty Ltd

Australian Business Number 96682550321

is at least 51 per cent owned by Indigenous Australians, managed by Indigenous Australians,
and controlled by Indigenous Australians.

This company's certification commenced on 03 June 2025

Under Supply Nation's certification policy, all businesses will be subjected to a rolling audit process in order
to ensure continued compliance with Supply Nation's certification criteria.

Issued by Supply Nation - ACN 134 720 362

Date issued: 3 June 2025

Kate Russell
CEO, Supply Nation



Signature
signaturefloors

Miramirang

signaturefloors.com.au