

# GRAVEL **PLANKS**



a true palette of contemporary shades



innovation & inspiration

| *Signature*<sup>®</sup>  
floorconcepts

a true palette of contemporary shades

GRAVEL**PLANKS**



**gravel** stone 400



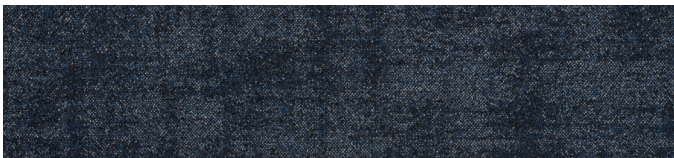
**gravel** cement 300



**gravel** ash 200



**gravel** coal 100



**gravel** ink 500

**product**  
**construction**  
**yarn/fibre**  
**pile weight**  
**pile height**  
**gauge**  
**tile size**  
**total thickness**  
**carton size**  
**total weight**  
**dimensional stability**  
**backing**  
**electrostatic propensity**  
**fire rating ISO 9239.1**  
**recommended adhesive**  
**installation method**  
**availability**  
**Comfi Bak® option**  
**customise Shapes™**  
**traffic**  
**warranty**  
**fire**  
**stain/soil**  
**sustainability**

gravel  
multi-level loop  
solution dyed nylon  
612 g/m<sup>2</sup> (18oz)  
3.5mm  
1/10  
250mm x 1000mm  
5.5mm  
5m<sup>2</sup>  
4612 g/m<sup>2</sup>  
<0.15%  
Thermo Bak™  
<3.0kv  
>4.5 kw/m<sup>2</sup> critical radiant flux  
RLA Polymers GS300  
ashlar, herringbone, basket weave  
in stock  
50m<sup>2</sup> minimum  
50m<sup>2</sup> minimum  
extra heavy duty commercial  
15 year  
suitable all areas  
Ultra Gard®  
GreenTag® GreenRate Level A certified  
EPD and Declare labels



**Traffic**



**Warranty**



**Fire**



**Stain/Soil**



**IN STOCK**



au 03 9401 0888  
nz 0800 150 555  
[signaturefloors.com.au](http://signaturefloors.com.au)  
[signaturefloors.co.nz](http://signaturefloors.co.nz)