

intelli**planks**  
**moss** 



create rich textural and visual  
experiences for a truly signature space

innovation & inspiration

| *Signature*<sup>®</sup>  
carpettileconcepts



**MOSS aqua 3193**



**MOSS wine 8561**



**MOSS navy 6740**



**MOSS henna 1675**



**MOSS whale 7112**



**MOSS red 3586**



**MOSS teal 2131**



**MOSS smokey 7578**



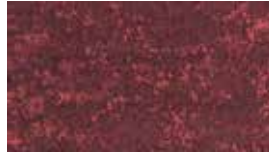
**MOSS duck 5456**



**MOSS orange 5324**



**MOSS sea 3936**



**MOSS maroon 2359**



**MOSS wolf 0098**



**MOSS yellow 4282**



**MOSS blue 3704**



**MOSS goose 9897**



**MOSS caramel 0905**



**MOSS green 0244**



**MOSS sky 7352**



**MOSS tan 0507**

**product construction**  
yarn/fibre  
pile weight  
pile height  
gauge  
plank size  
total thickness  
carton size  
total weight  
dimensional stability  
backing  
electrostatic propensity

**moss**  
multi-level loop  
Antron® Legacy  
1090g/m<sup>2</sup>  
5.5mm  
1/10  
250mm x 1000mm  
8.5mm  
4sqm  
6.0g/m<sup>2</sup>  
<0.15%  
Thermo Bak™  
<3.0kv

**fire rating ISO 9239.1**  
**recommended adhesive**  
**installation method**  
**co-ordinates with**

**Comfi Bak® option**  
**customise vivid 101**

**traffic warranty**  
**fire GreenStar**  
**availability**

>4.5kw/m<sup>2</sup> critical radiant flux  
RLA Polymers GS300  
ashlar, brick, herringbone  
all intelli & friendly carpet tiles

100m<sup>2</sup> min  
100m<sup>2</sup> min

extra heavy duty commercial  
15 year limited  
suitable all areas  
89% GreenStar points  
in stock

**Traffic**

Extra Heavy Duty Commercial 

**Warranty**

15 Year Limited 

**Fire**

Suitable All Areas 

**Green**

89% GreenStar Points 

**Stain/Soil**

Ultragard 



*Signature*<sup>®</sup>  
floorconcepts

au 03 9401 0888  
nz 0800 150 555  
**signaturefloors.com.au**  
**signaturefloors.co.nz**

**terms & conditions:** Specifications are subject to manufacturing tolerances and may be changed without prior notice. Dye lots may vary in colour from sample and between production lots. All product purchases are subject to Signature Floorcoverings Standard Terms and Conditions of Sale. Please refer to our Installation Guideline, Maintenance Manual and Warranty Document for further clarification. As per Competition & Consumer Act (CCA): "Our goods come with guarantees that cannot be excluded under the Australian Consumer Law. You are entitled to a replacement or refund for a major failure and compensation for any other reasonably foreseeable loss or damage. You are also entitled to have the goods repaired or replaced if the goods fail to be of acceptable quality and the failure does not amount to a major failure." **02/2018©**