

classicaxminster  
**royal lily | palazzo | chateau** 



woven carpet  
featuring hard wearing wool blend

innovation & inspiration

| *Signature*<sup>®</sup>  
wovenconcepts



royal lily majestic 79\*



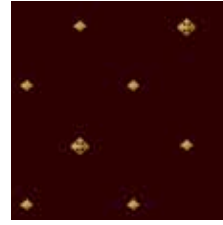
palazzo visconti 79\*



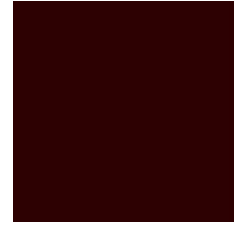
chateau edinburgh 79



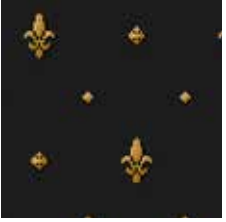
royal lily princess 18\*



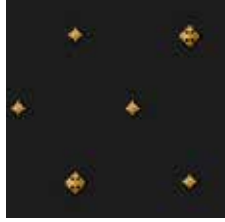
palazzo medici 18\*



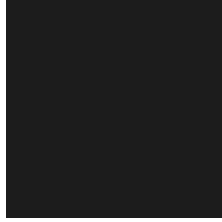
chateau windsor 18



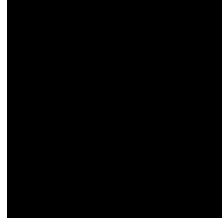
royal lily contessa 99\*



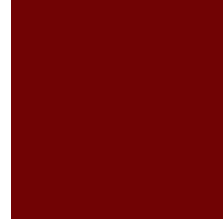
palazzo venetia 99\*



chateau canterbury 99



chateau richmond 100



chateau essendon 60

**product**  
**construction**  
**yarn/fibre**  
**yarn process**  
**yarn count**  
**pile weight**  
**pile height**  
**width**  
**pitch**  
**rows**  
**backing**  
**traffic**

classic axminster, royal lily & palazzo & chateau  
 woven axminster  
 80% wool (NZ & British wool), 20% nylon (epitropic fibre)  
 woollen spun  
 R667/2  
 1322g/m<sup>2</sup>  
 7mm  
 366cm  
 27.60 /10cm (7 per inch)  
 35.50 /10 cm (9 per inch)  
 polyester, polypropylene, jute, conductive latex  
 heavy duty commercial

\***pattern match**

\***drop match**

**availability**

30.5cm x 30.5cm  
 15.25cm x 15.25cm

in stock

**Traffic**



**Warranty**



**Fire**



**Green**



*Signature*<sup>®</sup>  
 floorconcepts

au 03 9401 0888  
 nz 0800 150 555  
[signaturefloors.com.au](http://signaturefloors.com.au)  
[signaturefloors.co.nz](http://signaturefloors.co.nz)

**contact your sales consultant for specifications**

**Terms & Conditions:** Specifications are subject to manufacturing tolerances and may be changed without prior notice. Product may vary in colour from sample and between production lots. All product purchases are subject to Signature Floorcoverings Standard Terms & Conditions of Sale. Please refer to our Technical Information Manual, Maintenance Guide & Warranty Guide for further clarification. 01/2019©