

MARICOR MARICAR
SIGNATURE STUDIO



DESIGNER COLLABORATION SERIES
VOLUME TWO

Signature







MARICOR MARICAR
SIGNATURE STUDIO

Maricor and Maricar are multi-disciplinarian design partners and twin sisters, with a spectacular repertoire of work in bespoke hand-embroidered illustration, typography and stop motion animation. Preferring to be called “Maker of Things” the self-taught duo’s love for pattern, texture and colour is evident in all their creations, mosaicked in the world of publishing and advertising. Working out of their eponymous studio in Sydney, they have a fervent following across the globe due to their impressive and unorthodox approach to combining the magic of needle and thread to create playful and vibrant embroidered wonders.

MARICOR / MARICAR

ODDS AND ENDS

Embedded in every detail is a creative integration of textures and tactility, of depth and dimension, and of ideas and imagination. Finding charm in the everyday the collection explores the connection of fluid shapes, artistic lines and bursts of colours in a deliberate style continuum. Use as a singular masterpiece or combined, the “Odds and Ends Collection” features 10 designs in 5 colourways across 4 carpet mediums.

The Designer Collaboration Series is an opportunity to select from an exclusive range of floor coverings focussed on Maricor / Maricar’s unique design principles to create playful and joyous works of art. Designs and colour schemes have been curated by Signature Studio and are all available to order with minimum order quantities and lead times, as everything is made to order for your space.



AXMINSTER DESIGN

BRUSH CONFETTI



CM-WN-2198-0002

AXMINSTER DESIGN

BRUSH CONFETTI

SPECIFICATIONS

Weight: 43oz
 Width: 400cm
 Pitch & Beatup: 7 x 9
 Pile Height: 8mm
 Yarn Type: 80% Wool / 20% Nylon
 Yarn Construction: 2ply / 740tex

DIMENSIONS

Carpet Width: 400cm Set
 Repeat Width: 400cm Set
 Repeat Length: 543cm

Delve into a multisensory journey inspired by experimental mark making. Created with freeform monochromatic brushwork, the design is mottled with elliptical explosions, contrasting the immediacy of gestural marks made by left over paint, celebrating lively spontaneity. Constructed in the continuous weave of Axminster, the large scale pattern challenges the traditional eye with an unexpected confidence.



CHROMA
CM-WN-2198-0002



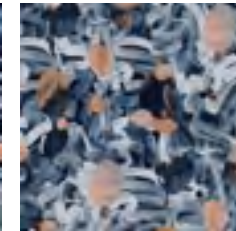
S102M S12B	S104M S12D	S104K S10D	S434F S24D	S433D S22C	S433B S20C
S104J S09D	S104H S08D	S434F S24D	S106H S08F	S106G S07F	S102M S12B
S106L S11F	S440K S28K	S431C S21A	S433M S30C	S106L S11F	S432L S29B
S437G S25G	S218B S02T	S217H S08S	S437G S25G	S549A S19U	S216J S09R
S547H S26S	S547J S27S	S544D S22P	S431K S28A	S326B S14F	S326C S15F

QUARTZ
CM-WN-2198-0011



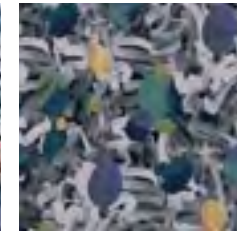
S434F S24D	S433D S22C	S433B S20C	S434F S24D	S433D S22C	S433B S20C
S106H S08F	S106G S07F	S102M S12B	S106H S08F	S106G S07F	S106L S11F
S549A S19U	S216J S09R	S104K S10D	S432J S27B	S328H S14T	S104J S09D
S109C S03J	S109B S02J	S105H S08E			

SHARD
CM-WN-2198-0013



S434F S24D	S433D S22C	S433B S20C	S434F S24D	S433D S22C	S433B S20C
S106H S08F	S106G S07F	S102M S12B	S106H S08F	S106G S07F	S106L S11F
S549A S19U	S216J S09R	S104K S10D	S432J S27B	S328H S14T	S104J S09D
S109C S03J	S109B S02J	S105H S08E			

BLOOM
CM-WN-2198-0014



S439M S30J	S433F S24C	S431D S22A	S439M S30J	S433F S24C	S431D S22A
S432L S29B	S106K S10F	S432K S28B	S432L S29B	S106K S10F	S432K S28B
S104K S10D	S432K S28B	S106J S09F	S432J S27B	S328H S14T	S104J S09D
S109C S03J	S109B S02J	S105H S08E			

LAKE
CM-WN-2198-0015



S439M S30J	S432L S29B	S432K S28B	S439M S30J	S432L S29B	S432K S28B
S432J S27B	S328H S14T	S105H S08E	S432J S27B	S328H S14T	S105H S08E

STORM
CM-WN-2198-0017



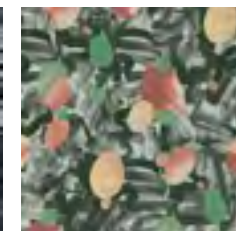
S104M S12D	S104K S10D	S102H S08B	S102M S12B	S104K S10D	S102H S08B
S102G S07B	S102L S11B	S108K S10H	S102L S11B	S105L S11E	
S108J S09H	S105C S03E	S103B S02C			

STILL
CM-WN-2198-0019



S107L S11G	S107K S10G	S108K S10H	S107L S11G	S107K S10G	S108K S10H
S108J S09H	S107G S07G	S549C S21U	S108J S09H	S107G S07G	
S541B S20L	S549B S20U	S549A S19U	S106A S01F	S108B S02H	S107C S03G
S325B S14E	S326C S15F	S326D S16F			

LICHEN
CM-WN-2198-0020



S107L S11G	S107K S10G	S108K S10H	S107L S11G	S107K S10G	S108K S10H
S108J S09H	S107G S07G	S549C S21U	S108J S09H	S107G S07G	
S541B S20L	S549B S20U	S549A S19U	S106A S01F	S108B S02H	S107C S03G
S325B S14E	S326C S15F	S326D S16F			

FLUSH
CM-WN-2198-0022



S107L S11G	S107K S10G	S108K S10H	S107L S11G	S107K S10G	S108K S10H
S108J S09H	S107G S07G		S108J S09H	S107G S07G	

AXMINSTER DESIGN

BRUSHSTH



CM-WN-2198-0010

AXMINSTER DESIGN
BRUSH

SPECIFICATIONS

Weight: 43oz
 Width: 400cm
 Pitch & Beatup: 7 x 9
 Pile Height: 8mm
 Yarn Type: 80% Wool / 20% Nylon
 Yarn Construction: 2ply / 740tex

DIMENSIONS

Carpet Width: 400cm Set
 Repeat Width: 400cm Set
 Repeat Length: 543cm

Unpredictable strokes of the brush sweep across the canvas inspired by child's play. Bursting with energy, the unrestrained and raw composition defies order and convention capturing creativity in its purest form. The design is bold yet simple creating maximum impact.



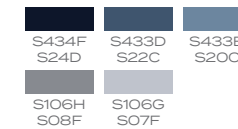
MONOCHROMATIC
CM-WN-2198-0010



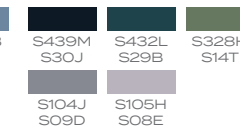
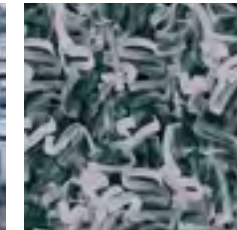
MONOCHROMATIC INVERSE
CM-WN-2198-0080



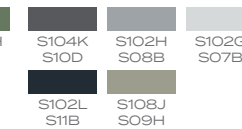
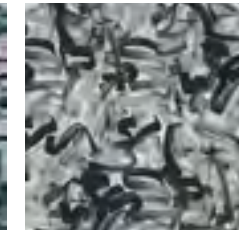
QUARTZ
CM-WN-2198-0023



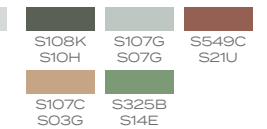
LAKE
CM-WN-2198-0025



STORM
CM-WN-2198-0028



LICHEN
CM-WN-2198-0029



AXMINSTER DESIGN

LUCKY MARBLE



CM-WN-2198-0004

AXMINSTER DESIGN

LUCKY MARBLE

SPECIFICATIONS

Weight: 43oz
 Width: 400cm
 Pitch & Beatup: 7 x 9
 Pile Height: 8mm
 Yarn Type: 80% Wool / 20% Nylon
 Yarn Construction: 2ply / 740tex

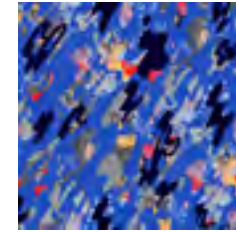
DIMENSIONS

Carpet Width: 400cm Set
 Repeat Width: 400cm Set
 Repeat Length: 400cm

Unstructured glass-like silhouettes, made by the formation of bubbles left by a soapy sponge, captures the fleeting beauty of the everyday. Set against a solid contrasting backdrop, Axminster production allows a depth of colour parallel to the quality and strength it offers.

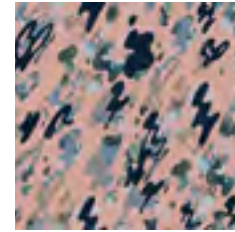


CHROMA
CM-WN-2198-0004



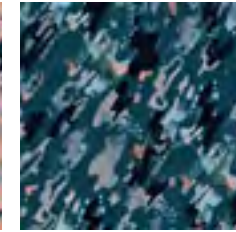
S102M S12B	S104M S12D	S104K S10D
S104J S09D	S104H S08D	S434F S24D
S106L S11F	S440K S28K	S431C S21A
S437G S25G	S218B S02T	S547H S26S
S547J S27S	S544D S22P	S217J S09S

QUARTZ
CM-WN-2198-0048



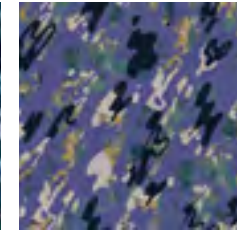
S434F S24D	S433D S22C	S433B S20C
S106H S08F	S106G S07F	S102M S12B
S433M S30C	S106L S11F	S432L S29B
S437G S25G	S549A S19U	S216J S09R
S431K S28A	S326B S14F	S326C S15F

SHARD
CM-WN-2198-0049



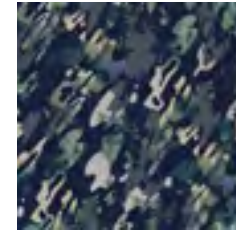
S434F S24D	S433D S22C	S433B S20C
S106H S08F	S106G S07F	S102M S12B
S433M S30C	S106L S11F	S432L S29B
S437G S25G	S549A S19U	S216J S09R
S431K S28A	S326B S14F	S326C S15F

BLOOM
CM-WN-2198-0050



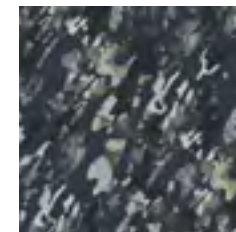
S439M S30J	S433F S24C	S431D S22A
S432L S29B	S106K S10F	S432K S28B
S104K S10D	S432K S28B	S106J S09F
S432J S27B	S328H S14T	S104J S09D
S109C S03J	S109B S02J	S105H S08E

LAKE
CM-WN-2198-0051



S439M S30J	S433F S24C	S431D S22A
S432L S29B	S106K S10F	S432K S28B
S104K S10D	S432K S28B	S106J S09F
S432J S27B	S328H S14T	S104J S09D
S109C S03J	S109B S02J	S105H S08E

STORM
CM-WN-2198-0052



S104M S12D	S104K S10D	S102H S08B
S102G S07B	S102L S11B	S105L S11E
S108K S10H	S105C S03E	S103B S02C

STILL
CM-WN-2198-0054



S108J S09H	S107G S07G	S549A S19U
S106A S01F	S108B S02H	S107C S03G
S325B S14E	S326C S15F	S326D S16F

AXMINSTER DESIGN

SPLODDGE



CM-WN-2198-0007

AXMINSTER DESIGN
SPLODGE

SPECIFICATIONS

Weight: 43oz
 Width: 400cm
 Pitch & Beatup: 7 x 9
 Pile Height: 8mm
 Yarn Type: 80% Wool / 20% Nylon
 Yarn Construction: 2ply / 740tex

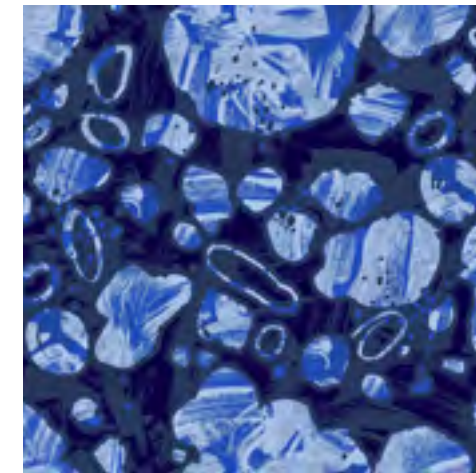
DIMENSIONS

Carpet Width: 400cm Set
 Repeat Width: 400cm Set
 Repeat Length: 320cm

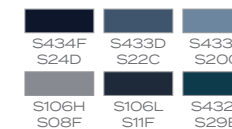
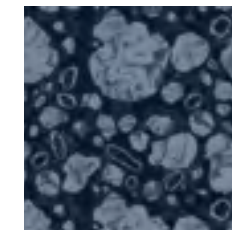
Influenced by the interplay between mark making and negative space to highlight the brushstrokes, the abstract is punctuated by tonal colourations. Subtle shadowing amongst the spontaneous strokes adds dimension in this fusion of designs.



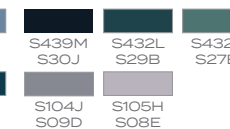
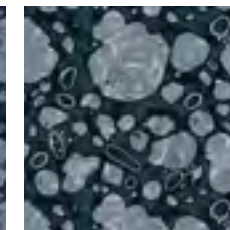
CHROMA
 CM-WN-2198-0007



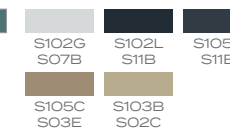
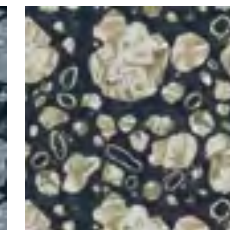
QUARTZ
 CM-WN-2198-0072



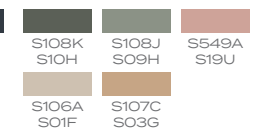
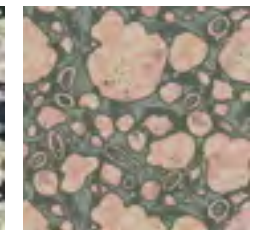
LAKE
 CM-WN-2198-0075



STORM
 CM-WN-2198-0076



LICHEN
 CM-WN-2198-0078



AXMINSTER DESIGN

PEONY



CM-WN-2198-0003

AXMINSTER DESIGN
PEONY

SPECIFICATIONS

Weight: 43oz
 Width: 366cm
 Pitch & Beatup: 7 x 9
 Pile Height: 8mm
 Yarn Type: 80% Wool / 20% Nylon
 Yarn Construction: 2ply / 740tex

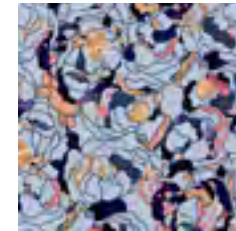
DIMENSIONS

Carpet Width: 366cm Set
 Repeat Width: 366cm Set
 Repeat Length: 483cm

Pretty peonies framed by graphic outlines. Influenced by the idyllic Japanese woodblock print technique, the result is an exploration of flattening a floral motif into basic structures and adding pattern back in as block elements. The elegant restraint of working in a stripped back way unveils a modernised feminine aesthetic.



CHROMA
CM-WN-2198-0003



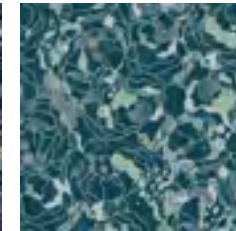
S102M S12B	S104H S08D	S434F S24D	S434F S24D	S433D S22C	S433B S20C
S106L S11F	S440K S28K	S431C S21A	S106H S08F	S106G S07F	S106L S11F
S437G S25G	S217H S08S	S547H S26S	S432L S29B	S549A S19U	S216J S09R
S547J S27S	S217J S09S	S541C S21L	S431K S28A	S326B S14F	S326C S15F

QUARTZ
CM-WN-2198-0031



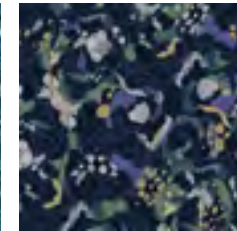
S434F S24D	S433D S22C	S433B S20C	S106H S08F	S106G S07F	S432L S29B
S431K S28A	S326B S14F	S432K S28B	S432K S28B	S106J S09F	S106J S09F
S432J S27B	S328H S14T	S104J S09D	S109C S03J	S109B S02J	S105H S08E

SHARD
CM-WN-2198-0033



S106H S08F	S106G S07F	S432L S29B	S439M S30J	S433F S24C	S432L S29B
S431K S28A	S326B S14F	S432K S28B	S432K S28B	S106J S09F	S106J S09F
S432J S27B	S328H S14T	S104J S09D	S109C S03J	S109B S02J	S105H S08E

BLOOM
CM-WN-2198-0035



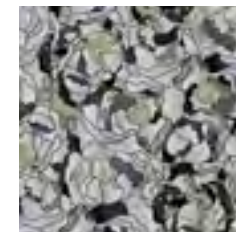
S439M S30J	S433F S24C	S432L S29B	S433F S24C	S431D S22A	S432K S28B
S432K S28B	S432K S28B	S106J S09F	S106J S09F	S104J S09D	S105H S08E
S432J S27B	S328H S14T	S104J S09D	S109C S03J	S109B S02J	S105H S08E

LAKE
CM-WN-2198-0036



S433F S24C	S431D S22A	S432K S28B	S433F S24C	S431D S22A	S432K S28B
S106J S09F	S104J S09D	S105H S08E	S432K S28B	S432K S28B	S106J S09F
S432J S27B	S328H S14T	S104J S09D	S109C S03J	S109B S02J	S105H S08E

STORM
CM-WN-2198-0039



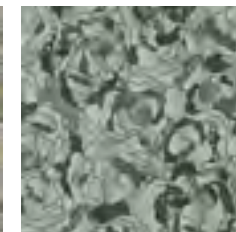
S102M S12B	S104M S12D	S104K S10D	S102H S08B	S102G S07B	S108K S10H
S102H S08B	S102G S07B	S102L S11B	S108J S09H	S105C S03E	S103B S02C
S105L S11E	S108K S10H	S108J S09H	S105C S03E	S103B S02C	

STILL
CM-WN-2198-0040



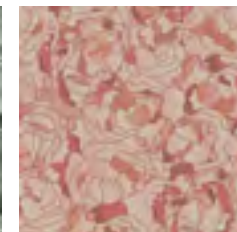
S102H S08B	S102G S07B	S108K S10H	S107L S11G	S107K S10G	S108K S10H
S108J S09H	S105C S03E	S103B S02C	S108J S09H	S107G S07G	

LICHEN
CM-WN-2198-0045



S107L S11G	S107K S10G	S108K S10H	S549C S21U	S541B S20L	S549B S20U
S108J S09H	S107G S07G		S549A S19U	S106A S01F	

FLUSH
CM-WN-2198-0046



S549C S21U	S541B S20L	S549B S20U	S549A S19U	S106A S01F
---------------	---------------	---------------	---------------	---------------

MARICOR/MARICAR

Maker of Things

“We hyperfocus on details and always search out patterns around us with novel textures. A lot of inspiration comes from noticing the little things that mostly go unnoticed - the unexpected in the mundane - and we always try to be playful in our designs.”

Co

Maricor - Designer

Ca

Maricar - Designer



AXMINSTER DESIGN

CAMOSQUIGGLE



CM-WN-2198-0005

AXMINSTER DESIGN

CAMOSQUIGGLE

SPECIFICATIONS

Weight: 43oz
 Width: 400cm
 Pitch & Beatup: 7 x 9
 Pile Height: 8mm
 Yarn Type: 80% Wool / 20% Nylon
 Yarn Construction: 2ply / 740tex

DIMENSIONS

Carpet Width: 400cm Set
 Repeat Width: 200cm Set
 Repeat Length: 181cm

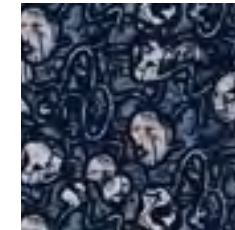
Experimental pairing of gestural marks and stone-like patterns become entangled in a surprisingly graphic narrative. Embrace the spirit of creativity with this bold design.



CHROMA
 CM-WN-2198-0005



QUARTZ
 CM-WN-2198-0056



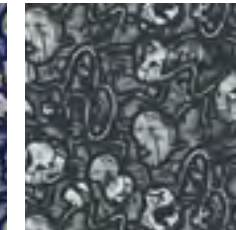
S434F S24D
 S433D S22D
 S433B S20C
 S106G S07F
 S549A S19U

LAKE
 CM-WN-2198-0058



S433F S24C
 S432K S28B
 S104J S09D
 S109C S03J
 S105H S08E

STORM
 CM-WN-2198-0060



S102H S08B
 S102G S07B
 S105L S11E
 S108K S10H
 S108J S09H

LICHEN
 CM-WN-2198-0062



S107K S10G
 S108J S09H
 S107G S07G
 S549A S19U
 S106A S01F

AXMINSTER DESIGN

MONIOTERRAZZO



CM-WN-2198-0006

AXMINSTER DESIGN

MONOTERRAZZO

SPECIFICATIONS

Weight: 43oz
 Width: 400cm
 Pitch & Beatup: 7 x 9
 Pile Height: 8mm
 Yarn Type: 80% Wool / 20% Nylon
 Yarn Construction: 2ply / 740tex

DIMENSIONS

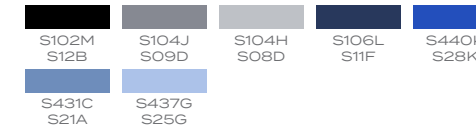
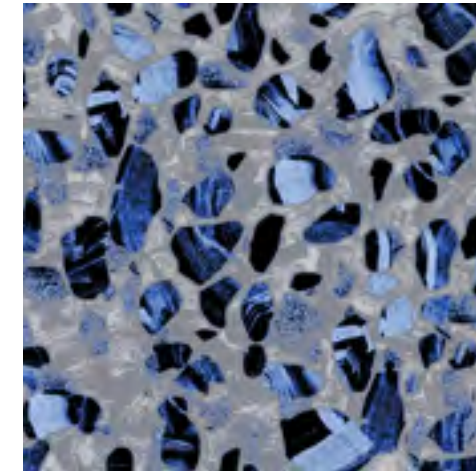
Carpet Width: 400cm Set
 Repeat Width: 200cm Set
 Repeat Length: 190cm

What started off inspired by the duo's favourite type - New York Marble - with its heavy movement, characterised by distinct monochrome veining, shifting towards more definitive speckles of terrazzo in a grand way which is now at the core of this daring design. With a natural propensity for strength and performance the combination of function and form are an undeniable force.



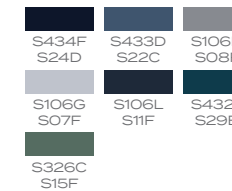
CHROMA

CM-WN-2198-0006



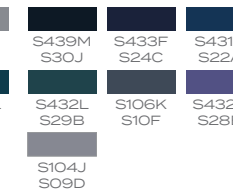
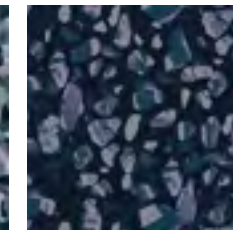
QUARTZ

CM-WN-2198-0065



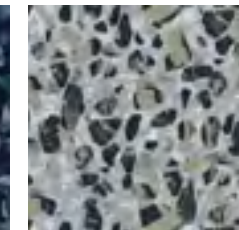
LAKE

CM-WN-2198-0067



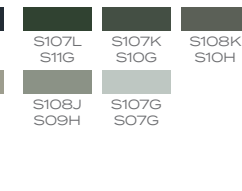
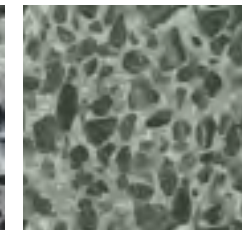
STORM

CM-WN-2198-0068



LICHEN

CM-WN-2198-0071



HAND TUFTED



FELFRAL

CM-HT-2198-0100

EMBROIDERY

HAND TUFTED
FLORAL EMBROIDERY

SPECIFICATIONS

Quality:	88oz
Pile Height:	9mm Cut 9mm Loop
Yarn Pile:	NZ Wool Bamboo Silk
Rug Size:	240cm Diameter 170cm X 240cm 200cm X 300cm 240cm X 340cm

Organic and spontaneous, unexpected textures found by a discarded painter's cloth guided the embroidery via beautifully fragmented colour stains. Translated into a luxuriously crafted hand tufted rug, the rich colours are vibrantly showcased through the contrasting yarns of New Zealand wool and bamboo silk. A sublime combination of cut and loop piles are perfectly positioned to mimic the tiny delicate details found in a Maricor / Maricar piece of art.



SPRING
CM-HT-2198-0100



SPRING
CM-HT-2198-0101



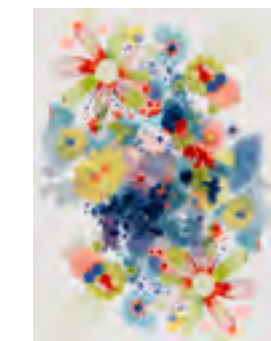
170cm

SPRING
CM-HT-2198-0102



200cm

SPRING
CM-HT-2198-0103



240cm

DYE INJECTION BROADLOOM

CECOTIDE



CM-DI-2198-0001

DYE INJECTION BROADLOOM

GEODE

SPECIFICATIONS

Weight: 38oz
 Width: 400cm
 Pile Height: 7mm
 Yarn Type: 100 Nylon 6
 Yarn Construction: Cut Pile

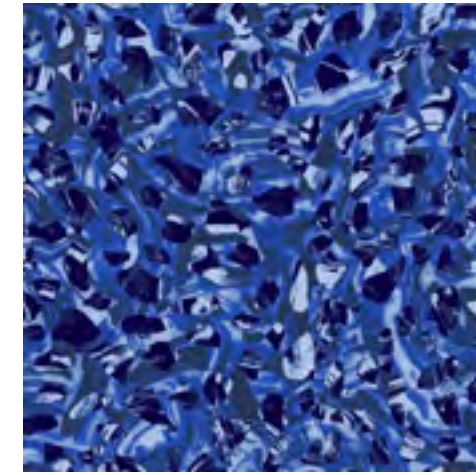
DIMENSIONS

Carpet Width: 400cm
 Repeat Width: 200 Set Match
 Repeat Length: 200cm

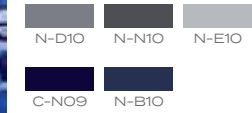
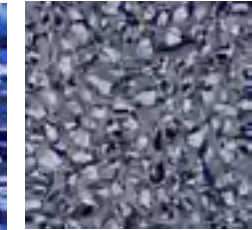
Originally designed for the qualities of Axminster, the Monoterrazzo design is adapted and recreated transforming into another flooring option for those projects requiring alternatives, and giving the collection a complete product offering.



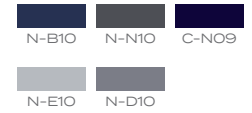
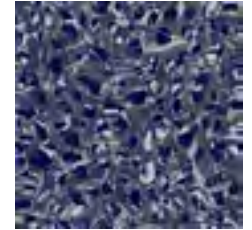
CHROMA
 CM-DI-2198-0001



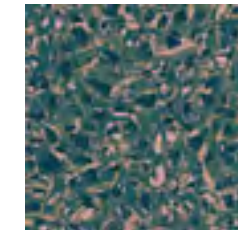
CHROMA LIGHT
 CM-DI-2198-0002



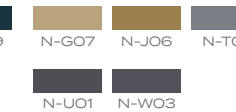
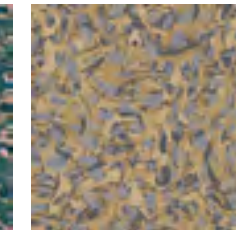
CHROMA DARK
 CM-DI-2198-0003



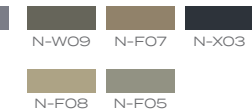
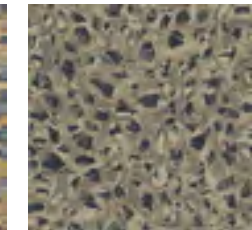
QUARTZ
 CM-DI-2198-0004



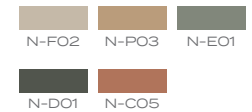
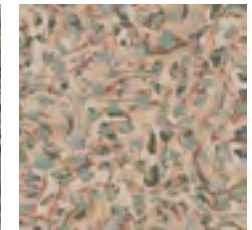
LAKE
 CM-DI-2198-0005



STORM
 CM-DI-2198-0006



LICHEN
 CM-DI-2198-0007



DYE INJECTION MODULAR

GEODE MODULAR



CM-DIM-2198-0002

DYE INJECTION MODULAR

GEODE MODULAR

SPECIFICATIONS

Construction:	Multi-level Loop
Fibre:	100% Nylon 6
Gauge:	1/10
Pile Weight:	646 g/m ²
Average Pile Height:	4mm
Total Thickness:	6.5mm
Backing:	Thermo Bak™
Tile Size:	50cm x 50cm
Total Weight:	5000 g/m ²

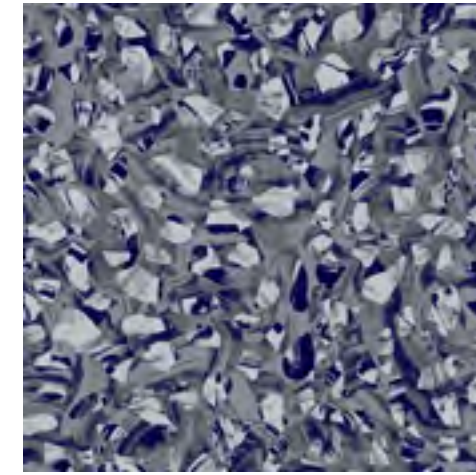
DIMENSIONS

Tile Size:	50cm x 50cm
Installation Method:	Directional, Ashlar, Brick, Quarter Turn

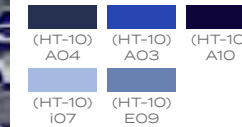
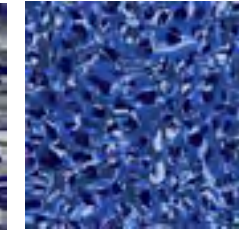
Reimagined yet again, Monoterrazzo has been redesigned with the durability and flexibility of carpet tiles. The versatile pattern is effectively translated into another medium, understanding the need for flooring solutions that are fit for purpose.



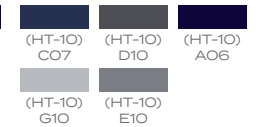
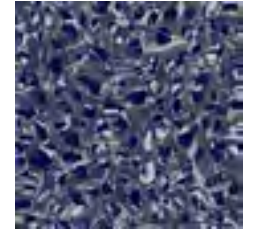
CHROMA LIGHT
CM-DIM-2198-0002



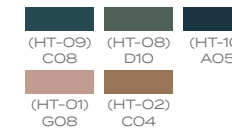
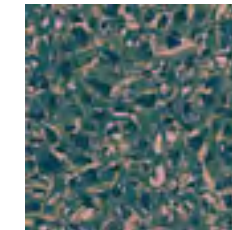
CHROMA
CM-DIM-2198-0001



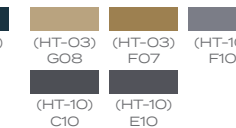
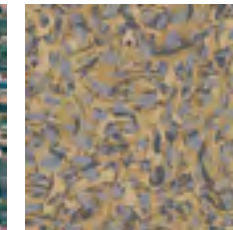
CHROMA DARK
CM-DIM-2198-0003



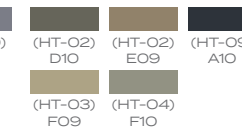
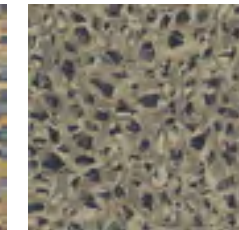
QUARTZ
CM-DIM-2198-0004



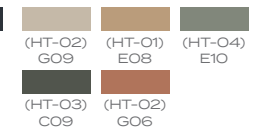
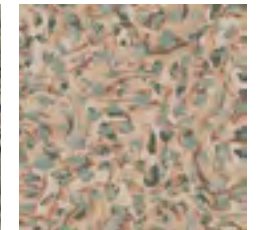
LAKE
CM-DIM-2198-0005



STORM
CM-DIM-2198-0006



LICHEN
CM-DIM-2198-0007

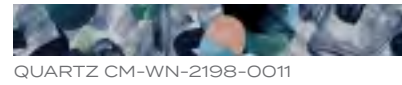


CATALOGUE OF DESIGNS

AXMINSTER
BRUSH CONFETTI



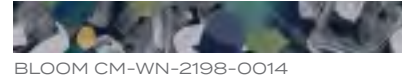
CHROMA CM-WN-2198-0002



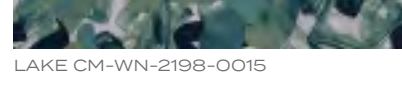
QUARTZ CM-WN-2198-0011



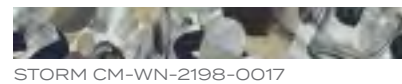
SHARD CM-WN-2198-0013



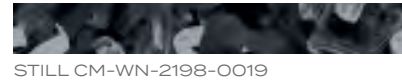
BLOOM CM-WN-2198-0014



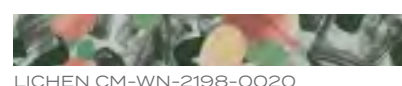
LAKE CM-WN-2198-0015



STORM CM-WN-2198-0017



STILL CM-WN-2198-0019



LICHEN CM-WN-2198-0020



FLUSH CM-WN-2198-0022

AXMINSTER
BRUSH



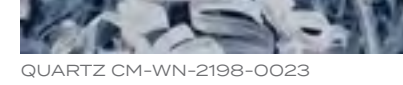
MONOCHROMATIC CM-WN-2198-0010



MONOCHROMATIC INVERSE CM-WN-2198-0080



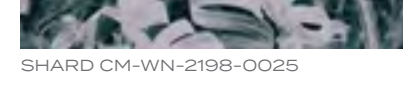
QUARTZ CM-WN-2198-0023



SHARD CM-WN-2198-0025

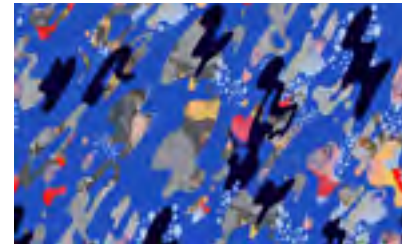


BLOOM CM-WN-2198-0028



LAKE CM-WN-2198-0029

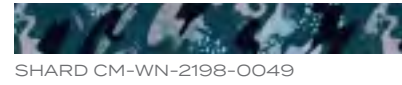
AXMINSTER
LUCKY MARBLE



CHROMA CM-WN-2198-0004



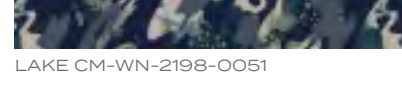
QUARTZ CM-WN-2198-0048



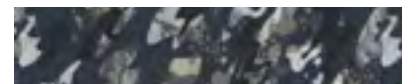
SHARD CM-WN-2198-0049



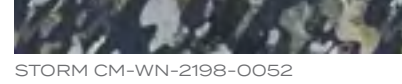
BLOOM CM-WN-2198-0050



LAKE CM-WN-2198-0051

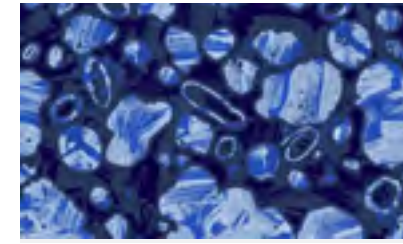


STORM CM-WN-2198-0052



STILL CM-WN-2198-0054

AXMINSTER
SPLODGE



CHROMA CM-WN-2198-0007



QUARTZ CM-WN-2198-0072



SHARD CM-WN-2198-0075

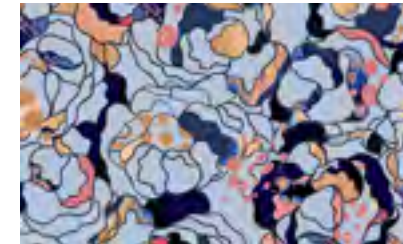


BLOOM CM-WN-2198-0076



LAKE CM-WN-2198-0078

AXMINSTER
PEONY



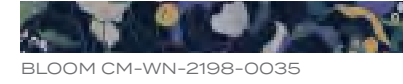
CHROMA CM-WN-2198-0003



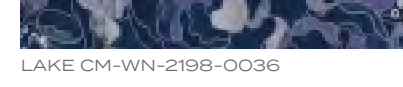
QUARTZ CM-WN-2198-0031



SHARD CM-WN-2198-0033



BLOOM CM-WN-2198-0035



LAKE CM-WN-2198-0036



STORM CM-WN-2198-0039



STILL CM-WN-2198-0040



LICHEN CM-WN-2198-0045



FLUSH CM-WN-2198-0046

AXMINSTER
CAMOSQUIGGLE



CHROMA CM-WN-2198-0005



QUARTZ CM-WN-2198-0056



SHARD CM-WN-2198-0058

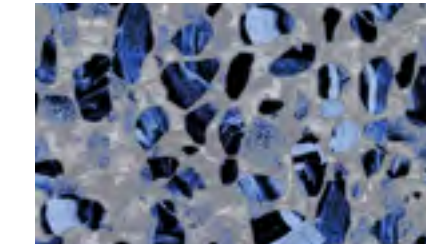


BLOOM CM-WN-2198-0060

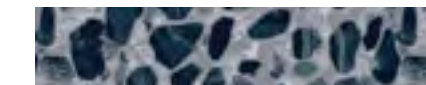


LAKE CM-WN-2198-0062

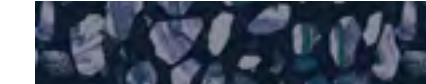
AXMINSTER
MONOTERRAZZO



CHROMA CM-WN-2198-0006



QUARTZ CM-WN-2198-0065



SHARD CM-WN-2198-0067



BLOOM CM-WN-2198-0068



LAKE CM-WN-2198-0071

DYE INJECTION BROADLOOM
GEODE



CHROMA CM-DI-2198-0001



CHROMA LIGHT CM-DI-2198-0002



CHROMA DARK CM-DI-2198-0003



QUARTZ CM-DI-2198-0004



LAKE CM-DI-2198-0005



STORM CM-DI-2198-0006



LICHEN CM-DI-2198-0007

DYE INJECTION MODULAR
GEODE MODULAR



CHROMA CM-DIM-2198-0001



CHROMA LIGHT CM-DIM-2198-0002



CHROMA DARK CM-DIM-2198-0003



QUARTZ CM-DIM-2198-0004



LAKE CM-DIM-2198-0005



STORM CM-DIM-2198-0006



LICHEN CM-DIM-2198-0007

HAND TUFTED
FLORAL EMBROIDERY



240cm (DIAMETER)
SPRING CM-HT-2198-0100

170CM X 240CM
SPRING CM-HT-2198-0101

200CM X 300CM
SPRING CM-HT-2198-0102

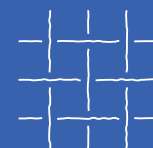
240CM X 340CM
SPRING CM-HT-2198-0103



PRODUCT OVERVIEW

CARPET MEDIUMS

AXMINSTER



A traditional type of hand-weave style, Axminster carpets are woven on looms with each piece of the pile yarn individually spun into place by weaving the pile and backing materials together, locking in the pattern through the carpet with precision and high definition, allowing for the most complex and intricate design to be created. This unique construction featuring 80% wool and 20% nylon fibres for strength and durability, together with the 2-ply yarn for vibrant, rich colours, makes Axminster broadloom carpets a superior and luxurious flooring option.

HAND TUFTED



A combination of the age-old weaving technique with modern technology, hand-tufted rugs are constructed by punching strands of wool on a canvas using a tufted gun. Woven from the back of the canvas with 80% New Zealand wool and 20% viscose into loops are later sheared to create a textured cut-pile surface with a 7mm pile height and 6mm cut pile, the rugs are created to exhibit the duality of a hardwearing yet high-end floor covering.

DYE INJECTION MODULAR



Printed carpet tiles are cut into square tiles from wall-to-wall rolls. They are woven from 100% nylon with Thermo Bak™. They are easily fitted together and are interchangeable and can be replaced without any fuss. They are ideal in a commercial setting because of their ease of maintenance, longevity, and flexibility. With a pile height of 4mm, they add extra comfort underfoot and superior acoustics.

DYE INJECTION BROADLOOM



Dye Injection Broadloom carpets are woven on a wide loom and installed wall-to-wall. Printed on a 4m wide broadloom carpet, dye injected designs have excellent colour blending capabilities and clear details in the design composition. Allowing repetitive motifs or standalone patterns in a broad palette of colours to bring rhythm and cohesiveness to a floor covering. Without any visible seams interrupting the design broadloom carpets provide another design option.

CM-DI-2198-0002



MARICOR MARICAR
SIGNATURE STUDIO

Signature Floors is not only about discovering new flooring solutions; It is also about constantly striving to redefine flooring concepts. Our Designer Collaboration Series is an extraordinary venture to bring together Australian design talent with our locally based design team.

In the second collaboration, Sydney-based designer duo Maricor and Maricar and our team of textile designers at Signature Studio have come together to externalise their intrinsic embroidered illustrations into joyful adaptations of fine tapestries of woven fibres. Replete with imagination, playfulness, and self-expression, the collection celebrates the designers' joie de vivre in the simple pleasures of life and the studio team's insight in introducing textures, colours, and rhythm that lead towards a perfect interior space.

signaturestudio.com.au maricormaricar.com

WITH THANKS

FURNITURE PARTNERS

ownworld

ownworld.com.au

Doweljones

doweljones.com

Specifications are subject to manufacturing tolerances and may be changed without prior notice. Dye lots may vary in colour from sample and between production lots.

All product purchases are subject to Signature Floorcoverings Standard Terms and Conditions of Sale. Please refer to our Installation Guideline, Maintenance Manual and Warranty Document for further clarification.

As per Competition & Consumer Act (CCA): "Our goods come with guarantees that cannot be excluded under the Australian Consumer Law. You are entitled to a replacement or refund for a major failure and compensation for any other reasonably foreseeable loss or damage. You are also entitled to have the goods repaired or replaced if the goods fail to be of acceptable quality and the failure does not amount to a major failure."

Australia
T+613 9401 0888
signaturefloors.com.au

New Zealand
T+64 800 150 555
signaturefloors.co.nz

© Copyright 2023.

S T U
SIGNATURE
D I O

SIGNATUREFLOORS.COM.AU

SIGNATUREFLOORS.CO.NZ