

**savvy** | **intellitiles smart** 



intelligent technology  
combined with smart benefits

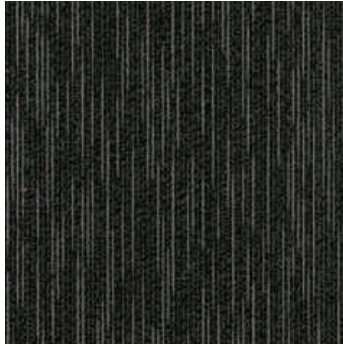
**innovation & inspiration**

| *Signature*<sup>™</sup>  
carpettileconcepts

for total flexibility & cost efficiency



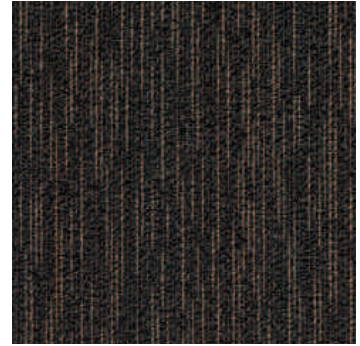
**savvy proficient 5205**



**savvy nimble 5207**



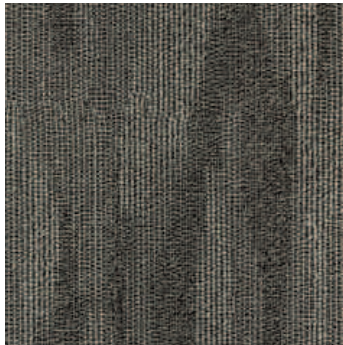
**savvy astute 5208**



**savvy adept 5203**



**smart ingenious 5707**



**smart acumen 5705**



**smart IQ 5708**



**smart headspace 5703**

**product construction**  
**yarn/fibre**  
**pile weight**  
**pile height**  
**gauge**  
**tile size**  
**total thickness**  
**carton size**

intelli tiles, savvy & smart  
level loop pile  
solution dyed nylon  
700g/m<sup>2</sup>  
4.0mm  
1/10  
500mm x 500mm  
7.0mm  
5sqm

**total weight**  
**dimensional stability**  
**backing**  
**electrostatic propensity**  
**fire rating ISO 9239.1**  
**recommended adhesive**  
**installation method**  
**co-ordinates with availability**

5.4kg/m<sup>2</sup>  
<0.15%  
Thermo Bak, Comfi Bak (PU)\*\*  
<3.0kv  
3.6 kw/m<sup>2</sup> critical radiant flux  
RLA Polymers GS300  
quarter turn or directional  
all intelli carpet tiles  
in stock

**Traffic**

Extra Heavy Duty Commercial 

**Warranty**

15 Year Limited 

**Fire**

Suitable All Areas Except PC\*NSB† 

**Green**

GBC Members 

**Stain/Soil**

Ultragard 

\* PC: Patient Care Areas † NSB: Non Sprinkled Buildings

*Signature*™  
floorconcepts

tel 03 9401 0888  
fax 03 9401 0866

[signaturefloors.com.au](http://signaturefloors.com.au)

**\*\*contact your sales consultant for specifications**

**terms & conditions:** Specifications are subject to manufacturing tolerances and may be changed without prior notice. Dye lots may vary in colour from sample and between production lots. All product purchases are subject to Signature Floorcoverings Standard Terms and Conditions of Sale. Please refer to our Installation Guideline, Maintenance Manual and Warranty Document for further clarification. 12/2011©