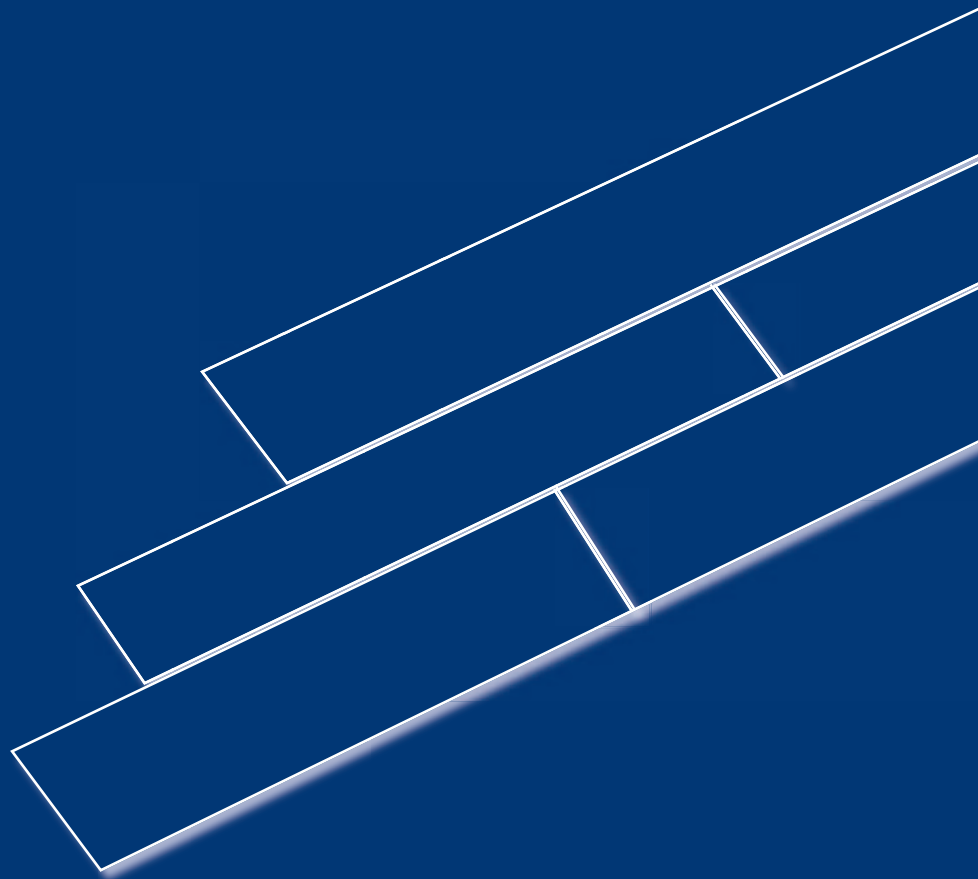


Installation instructions.

Installing floors is easy, if you go about it the right way! The following guide shows you how to proceed, with special attention to the use of subfloors and profiles.

Full explanations and diagrams ensure that even the most complicated situations are perfectly finished and will give life-long results.



in 5 steps.

Balterio Click xpress®.



Click xpress® is a **revolutionary system** used for installing laminate. This unique **rolling system** allows you to install laminate in hardly any time at all without using glue. Click xpress® ensures **seamless, solid laminated surfaces** that will last for years. Besides, the laminate floor **can be replaced again and again**.

The tools you need:

- a fretsaw and a small handsaw;
- a pencil;
- a measuring rod or measuring tape;
- waterproof adhesive tape;
- sanding block or sanding machine;
- parquetry installation kit: expansion blocks, buffer block, tension iron.

Preparation.

Acclimatisation.

- Leave the planks packed in the centre of the room where you are going to install the laminate floor;
- Leave the planks to acclimatise for 48 hours depending on the local temperature and air humidity;
- The ideal room temperature is approx. 22°C and the ideal air humidity approx. 55%;
- Check the state of all planks when unpacking them. Laminate planks with visible defects must not be installed.



The surface.

- Balterio laminate can be installed on any hard surface; soft surfaces (such as wall-to-wall carpets) must first be completely removed.
- Make sure the surface is dry, even and dust-free before installing the subfloor.
- Smoothen all irregularities taller than 2 mm.

Fresh concrete.

In new houses recently poured concrete should be left to dry for a sufficiently long period. The room should be adequately ventilated.

The rule of thumb is:

- 1 week of drying per cm for any thickness up to 4 cm;
- 2 weeks of drying per cm for any thickness over 4 cm;
- (thus, you should leave concrete with a thickness of 6 cm drying for $(1 \times 4) + (2 \times 2) = 8$ weeks)
- The humidity of the concrete should not exceed 2.5% (CM method)

Note that environmental factors should be taken into account.

Always install a dampscreen before laying a subfloor.

The subfloor.

When installing a laminate floor a good subfloor is indispensable, as it should be the perfect support of your laminate floor and guarantee a longer life for your floor. **No matter what subfloor you are installing, first install a dampscreen.**

Apply the dampscreen as follows:

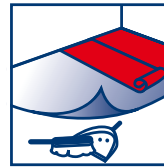
Lay out the dampscreen in long stretches over the entire floor.

Allow the dampscreen to go up the wall approximately 5cm.

If the foil is applied in different stretches, make sure the pieces overlap by at least 20 cm before taping them together (with waterproof tape).

The Balterio subfloors:

- **Balterio dampscreen** (= BASIS, should always be installed)
- **Balterio Blue Floor**
- **Balterio Metal Floor** (No need for a dampscreen)
- **Balterio Natural Wood Sound**



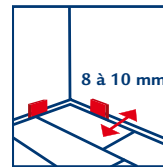
Once the floor has been cleaned and smoothed, the dampscreen and the subfloor installed, the laminate can be put in.

Click xpress® is known as a **'rolling system'**. This means there is no tension among the planks. The shape of the tongue and grooves are perfectly matched to prevent play. The result is a seamless link and flexible installation options.

The Click xpress® system enables you to join the planks in two different ways, either tongue-in-groove or groove-in-tongue. The simplest procedure, however, is tongue-in-groove.

The overall appearance of the finished laminate floor mainly depends on the orientation of the planks, the direction of the light and the line of vision. The orientation may in addition strongly affect the perceived size and perspective of the room. Install the Balterio laminate always crosswise over the subfloor.

Expansion.



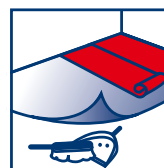
Apart from the first acclimatisation period of 48 hours before unpacking the planks, laminate floors will remain sensitive to shrinkage and expansion even after installation. This feature can easily be compensated for if you leave an expansion joint of 8 to 10 mm on all sides by using Balterio Spacers® expansion blocks. A similar expansion joint should be left around obstacles, such as piping, doorframes and thresholds.

For larger surfaces a connecting profile should be used for each ten metres (both length or width) to compensate for shrinkage and expansion. If you install laminate in several rooms on the same level an 8 mm expansion joint should be provided at each boundary between rooms by using a connecting profile. Placing heavy objects (water beds, clothing cupboards) on laminate is not a problem, provided an 8 mm expansion joint is planned off around the object; afterwards, you may finish the joint with a Balterio skirting or profile.

Length of room (in metres)	Length of room (feet)	Suggested width of expansion joint
3 - 9 m	10 - 30 ft.	8 mm
10,6 - 12 m	35 - 40 ft.	10 mm
13,7 - 15,2 m	45 - 50 ft.	13 mm
16,8 - 19,8 m	55 - 65 ft.	19 mm
21,3 - 24,3 m	70 - 80 ft.	22 mm
29 - 30,5 m	95 - 100 ft.	25 mm

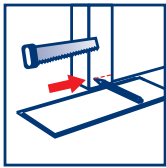
Room Surface (in m ²)	Room Surface (in sq.ft.)	Suggested width of expansion joint
9 - 93 m ²	100 - 1000 sq.ft.	8 mm
102 - 167 m ²	1100 - 1800 sq.ft.	10 mm
177 - 242 m ²	1900 - 2600 sq.ft.	13 mm
251 - 279 m ²	2700 - 3000 sq.ft.	16 mm

Step 1: Subfloor and surface.



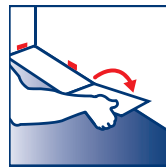
Clean and smooth the subfloor, remove any grease; install the dampscreen and the subfloor; check the laminate planks for any damage.

Step 2: Height of the doorframe.

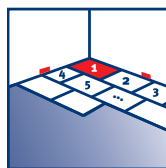


To measure **the height of the doorframe**, place a laminate plank against the doorframe, with the decorated side down; mark the height and saw off the door and doorframe to the height marked. The laminate plank can then easily be pushed underneath the doorframe.

Step 3: The first rows.

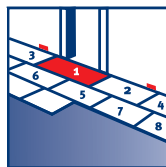


The advantage of the Click xpress® system is that it allows you to **choose your own starting position**. Moreover, you may work either from **right to left** or from **left to right**, whichever is best in your own specific situation. Depending on the laying direction, the best place to start from is a door or a corner, preferably with the tongue side facing the wall.



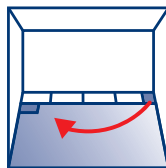
Possibility 1: Starting from a corner.

Place a plank in the corner, with the tongue side turned towards the wall. Roll the front edge of the second plank into the first plank by using the tongue-in-groove method and continue until the first row is ready. Remember that an 8 to 10 mm expansion should be foreseen between the first row and the wall.



Possibility 2: Starting from a door.

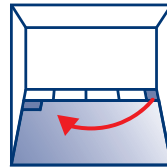
Start installing the row near the door and then move away from the door. Saw the plank that is to be placed underneath the doorway to size while you make sure there is a 10 mm expansion joint and slide the plank inside the doorframe. Saw the planks that complete the first row to size.



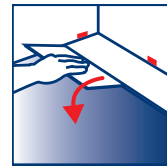
The final plank.

Measure the length of the final plank in the row and saw to size. The cut-off part of this plank may be used for starting the next row, provided the part is not shorter than approx. 25 cm.

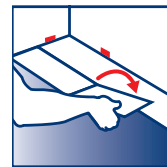
Step 4: Completing the floor.



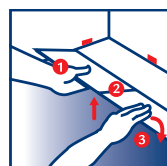
Take the cut-off part of the final plank in the previous row and use it to start the next row. Begin at the same side where you began the previous row and once again allow for an 8 to 10 mm expansion joint between the laminate plank and the wall.



Roll the laminate plank against the previous row and push it downwards.

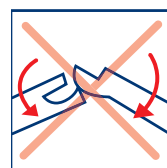


Roll the short side of the next laminate plank into the previous plank and press down against the groove of the previous row.



1. Carefully lift the laminate plank, together with the previous plank in the same row, to an angle of 30°.
2. Press it against the previous row.
3. Once the planks are properly joined they can be pushed downwards.

Continue in this way until the floor is completed. First roll the short sides of the planks until they connect and only then roll the two combined planks into the completed row.



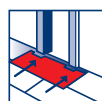
To avoid damage to the connecting system it is strongly recommended never to roll a complete row in order to join it to the previous row. Always make sure there is an 8 to 10 mm expansion joint between the laminate planks and walls or fixed objects.

Obstacles: The doorpost.



If there is another door in the facing wall:

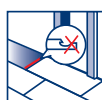
- position the planks as close as possible to the door;
- sand the short edge of the installed plank with a triangular sanding machine or a wooden block with some sand paper;
- sand the lip of the plank in the previous row.



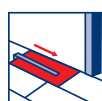
saw the plank to be installed to size and slide it underneath the doorpost;



put the plank in position by knocking its short and long sides gently into the sanded plank along a horizontal plane;



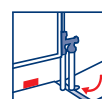
sand the short lip of the groove of the last installed plank;



next, roll the long side of the second plank of the last but one row and press as tightly as possible against the installed plank. The plank may also be pulled tight by means of a tension iron.

Complete the row as in step 5.

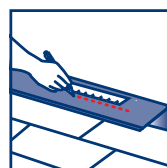
Piping.



Drill an opening with a diameter larger by 10 mm than that of the pipes at the short edges of the 2 planks that will be installed around piping.

Place the 2 planks around the pipes and roll them together.

Step 5: The final row.



Once again, make sure there is an 8 to 10 mm expansion joint. Take the joint into account when measuring and sawing the planks of the final row lengthwise.

Install the final row.

Remove all expansion blocks and level off edges of the dampscreen before you begin finishing (such as installing skirtings).

Finishing and re-installation.

Immediately after the Click xpress® floor covering has been installed the floor can be walked on and you may begin finishing it. For a decorative final finish, you can choose from the wide range of Balterio accessories, including skirtings, wallbases, quarter rounds, ...

Mount skirtings directly onto the walls rather than to the floor to allow the laminate underneath the skirtings to expand and shrink. We recommend that you use Balterio skirting clips only. In order to avoid damage we recommend not to apply protective tape to the skirting boards.

Tip!

Always saw laminate planks with the decorated side turned down to prevent damage to the décor.